



HanDBase®

**Forms for Palm OS
Version 4
Manual**

Revision Date 12/12/2007

HanDBase® is a Registered Trademark of DDH Software, Inc.

All information contained in this manual and all software applications mentioned in this manual are
Copyright 1997-2007 DDH Software, Inc.

HandBase Forms

Introduction

What is HandBase Forms?

HandBase Forms is an Add-On utility that works with the HandBase application for your handheld device.

This tool makes it possible to create custom forms to replace the New/Edit Record screen.

What packages include HandBase Forms?

HandBase Forms is available as part of the following packages. Also, if you are a Palm OS user the handheld application is available separately if you use a Macintosh or Other desktop OS. Palm OS users that purchase the HandBase Forms for Palm OS separately and use Windows will get the handheld and desktop applications.

HandBase for Palm OS Professional edition

HandBase for Palm OS Enterprise edition

System Requirements

Please note, the memory requirements are for the applications themselves. The forms you create and the databases you create the forms for will require additional memory. The larger your database files and the more complex your forms the more memory that will be required.

Palm OS

Palm OS 4.0 or higher

75 Kb of available memory (550 if used with the HandBase 3.0 application)

HandBase application version 4.0 or higher

Palm Desktop and HotSync Manager version 4.0 or higher

Windows Desktop

2 MB of available hard drive space

256 MB of RAM is recommended

Windows 95, 98, 98 SE, ME, NT 4.51, 2000 or XP home or Pro, Vista Home, Home Premium, Business or Ultimate

HandBase Desktop version 4.0 or higher

Getting Started

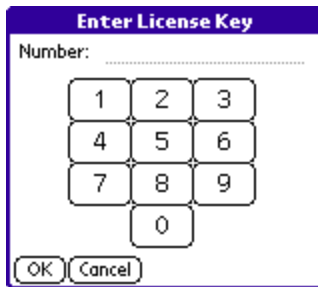
Program Registration

In order to use your registered version of HandBase Forms you will need to enter your 16 digit License Key.

If you purchased this software online or directly from DDH Software then you were either provided your License Key at the time of purchase or you can obtain your License Key by logging into the DDH Software website using the email address you registered with and the password you were provided when you registered.

If you purchased this software in a retail outlet then this License Key is printed on the insert to the package for the software. Be sure to use the correct code for your handheld and desktop platforms. You will also want to follow the instructions for registering the software so that you can download future updates and receive Technical Support.

You will be prompted to enter your License Key during the installation process. Once entered you will be able to use the HanDBase Forms you are registered for.



If you have a Palm OS or a Pocket PC/Windows Mobile powered handheld you will also be required to enter your registration code in the handheld application in order to be able to use it there. To the left are the screens you will see when prompted to enter your registration code on your handheld. When entering use the Number Key Pad, do not try entering any spaces or dashes.

Installation

The desktop application is installed when you run the installation program you downloaded from the DDH Software, Inc. Website.

Palm OS

For the Palm OS handheld application you will first want to make sure you have the appropriate space available on your handheld. The space required for the program alone is approximately 70K. The database forms you install or create will take up additional space as well. Additionally, this program requires that you have HanDBase 3.0 or higher installed also. The combination of this with HanDBase is approximately 540Kb.

To see if you have enough memory, access the Applications menu on your Palm OS powered handheld and then access the Menu. Select Info from the App menu. Then, if not highlighted, select the Size button at the bottom. At the top of your screen it will indicate the Total amount of memory and how much is available. If you do not have at least the appropriate amount free, you will either have to choose to delete apps, or choose to not install this program until you have that amount of free memory.

If HanDBase Forms was not installed to your handheld automatically you can install HanDBase Forms onto your Palm OS powered handheld device manually. Follow the instructions below for your desktop platform:

WINDOWS

NOTE: If you have run the Installation program, selected your user name during installation, HotSync'd and HanDBase is showing on your handheld then the following steps are not necessary.

1. From the Start Menu choose Programs then Palm Desktop and then choose Install Tool. The Install Tool screen appears.
2. Use the pop-up menu at the top of the screen to specify which handheld you want to install onto (if you use more than one with this PC).

3. Drag-and-drop method: Locate the HBForms.PRC file, and simply drag the icon into the Install Tool window.

4. Dialog box method: Click Add.... You're shown the usual Windows Open File dialog box. Find the HBForms.PRC file, then double-click.

5. When you're finished choosing the files to install, Click the "Done" button On the next window that comes up click "OK" and the windows will close.

MACINTOSH

1. From the Instant Palm Desktop menu, choose HotSync Manager. The HotSync Manager screen appears.

2. From the HotSync menu, choose Install. A dialog box appears, showing all the software you've scheduled for installation. Use the pop-up menu at the top of the screen to specify which handheld you want to install onto (if you use more than one with this Macintosh).

3. Drag-and-drop method: Click the Desktop. Locate the HBForms.PRC file, and simply drag the icon into the Install Handheld Files window.

4. Dialog box method: Click Add to List. You're shown the usual Macintosh Open File dialog box. Find the HBForms.PRC file, then double-click.

5. When you're finished choosing files to install, close the window and quit HotSync Manager.

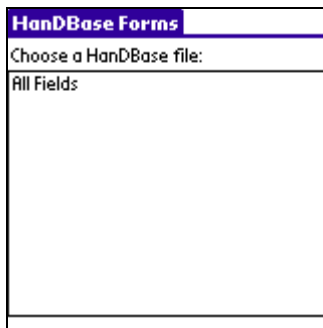
Using HanDBase Forms

Introduction

The following sections describe how to use the HanDBase Forms application to create custom forms for your databases. Because the majority of the steps and settings are the same between the Palm OS handheld application, the Pocket PC/Windows Mobile handheld application and the HanDBase Forms Desktop the information has been combined. Where there are differences they are noted.

HanDBase Forms Interface

Palm OS Handheld Interface



If you open HanDBase Forms directly you will see the screen to the left which will enable you to Select a HanDBase database to create or edit forms for.



Once you have selected a database you will see this screen, which will enable you to select a Form. The following options are available from this screen.
NOTE: If you select the Forms button from the DB Properties of the HandBase database you will be brought directly to this screen.



Select this button to return to the Choose Database screen, or if you entered this form from your database you'll be taken back to your Database in HandBase.



Select this button to create a New Form.



Select this button to open the currently selected form so you can edit that form.



When you select this button three additional options will become available.



Select this button to Delete the currently selected Form.



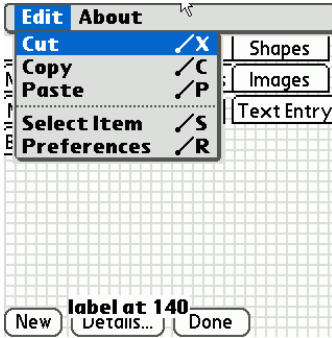
Select this button to Beam the currently selected database, via Infrared, to another user.
NOTE: The recipient must have HandBase 3.0 or higher in order to view the forms you are beaming. If they wish to edit the Forms you beam them must also have the HandBase Forms application installed.



Select this button to make an Exact Copy of the currently Selected form. This will enable you to then make slight modifications to an existing Form. This is especially useful if all your Forms screens are the same and you just need to change a few items.



Select this button to see the Form Details.



Once you open a Form to edit there are some additional options available. From the menu, seen below there following options are available.

Cut

If you select a control on the form you can use this option to cut it to the clipboard so it in can be pasted at a different location or even into a different form.

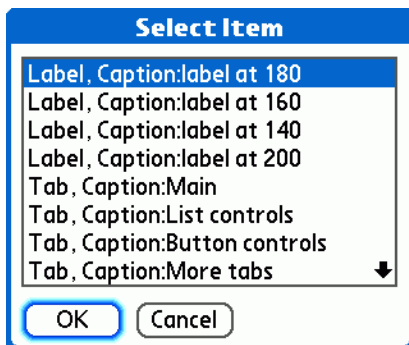
Copy

If you select a control on the form you can use this option to copy it to the clipboard so that it can be pasted to make a copy on this form or even in another form.

Paste

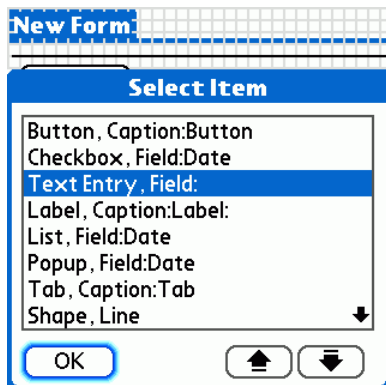
If you have selected a control and already cut or copied it to the clipboard you can use this option to paste it onto the same form or even onto a different form.

Select Item



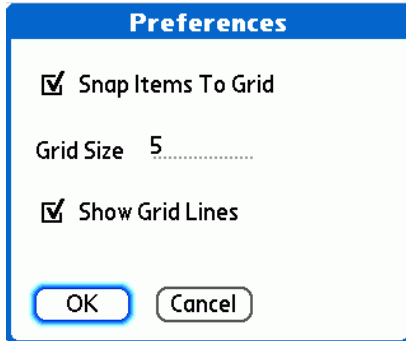
To make selecting a control on a form easier, especially when you have many controls, you can use this option. The dialog to the left is displayed when you choose this item. You can then choose any control from this list to make it easier to edit the Details.

Set Item Order



Using this screen you can change the “Tab” order of the controls in your form. Doing this enables you to to navigate your form more easily using the Tab key on your keyboard enabled device or to use the 5-way directional pad on your device to move to the controls in a specific order for editing.

Preferences



When you select Preferences from the Edit menu you will see the dialog to the left. This enables you to set options for controlling the Grid functionality of the program. The following options are available here.

Show Grid Lines

This option is checked by default. When enabled your forms in the Form Designer will show grid lines to make it easier to line up your controls

Grid Size

If *Show Grid Lines* is enabled this option sets how large, in pixels, each grid box is.

Snap Items To Grid

If *Show Grid Lines* is enabled this option determines if your controls will snap to the grid

Creating Forms

General Information

To create a new form either select New from the Form menu in the HanDBase Forms Desktop or from the Select Form screen on the handheld tap the New button. This will open a blank canvas for you to begin adding Controls to. See the Form Controls section below for details on adding controls. Additionally, although it may be hard to tell you can create Multiple forms in this "Forms file". You can then use different features to jump between them making it possible to create a tabbed interface or even a wizard that walks the user through entering data. You can even create different sets of forms to be used on the different supported platforms.

Form Details

The images to the left show the Forms Details screens for the Forms Desktop and Palm OS handheld HanDBase Forms. These details enable you to set the basic options for the form.

General

Following is a list of their available properties for setting the basic options for your Forms. Some properties are only applicable on the Desktop and are so indicated by *(Desktop)* indicated following the property.

Form Name:

Specify the Name you would like to give this form. You can then have this name displayed as the Form Title, in the following option, if you desire. Otherwise this will only be a reference point when editing your forms.

Title:

User the selector to specify what you want to see as the Form Title when you are creating a New Record or Editing an existing Record in HanDBase. Following are the options available.

No Title

Select this to display No Title.

NOTE: Selecting this option will give you more room to put controls at the top of the screen.

Form Name

Select this to have the Form Name, specified in the above option, be the Form Title.

HanDBase

Select this to have the application name, HanDBase, displayed as the Form Title.

Record Y of X

Select this to have the Record Number of the total number of records displayed as the Form Title. For Example, *Record 13 of 345*

Other

Select this to be able to specify another name for the Form Title. If you select this option another option will appear for you to enter the Other Form Title.

Title Text:

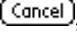

Enter the "Other" name you would like to specify as the Form Title.

Form Color:

Select this button/icon to be able to set the background color of the form you are designing. Currently, on the handheld, it is possible to select from a palette of 256 colors, if your device supports color.

NOTE: On the Palm OS, when designing a form, you can also switch from the palette to an RGB selector screen. This makes it easier to set the color if you know the RGB values.

Show Buttons:

Use this option to specify whether you want the standard buttons, listed below, to be either Text or Graphical buttons on a Palm OS handheld. Text buttons are simply text with a thin border around them, ie , or a more three dimensional button, ie .

NOTE: In the HanDBase desktop these buttons will always be graphical, like all standard Windows buttons. On the Pocket PC there are no actual buttons but simply the standard ones in the toolbar or the Ok button in the upper righthand corner.

Ok (Button):

If this option is checked the (Ok) button will be displayed at the bottom of the Form screen when viewing or creating a record in HanDBase. This button will enable you to Save any changes you've made to your record and return you to the List View.

Cancel (Button):

If this option is checked the (Cancel) button will be displayed at the bottom of the Form screen when viewing or creating a record in HanDBase. This button will enable you to Cancel any changes you've made to your record and return you to the List View.

Details (Button):

If this option is checked the (Details) button will be displayed at the bottom of the Form screen when viewing or editing a record in HanDBase. This button will enable you to access the details of the record allowing you to do things like Set Alarms, Delete the Record or Encrypt the Record manually, if enabled in the Database properties.

New (Button):

If this option is checked the (New) button will be displayed at the bottom of the Form screen when viewing or creating a record in HanDBase. This button enables you to tap it to create a New Record.

Form Height

In this option you can specify the height, in pixels, of the Form.

Form Width

In this option you can specify the width, in pixels, of the Form.

Form Details		Platforms	
General		Platforms	
Palm:	Scale Factor 1.0		
Start Form On	<input checked="" type="checkbox"/> New	<input checked="" type="checkbox"/> Edit	
PPC:	Scale Factor 1.5		
Start Form On	<input checked="" type="checkbox"/> New	<input checked="" type="checkbox"/> Edit	
Desktop:	Scale Factor 2.0		
Start Form On	<input checked="" type="checkbox"/> New	<input checked="" type="checkbox"/> Edit	
SP:	Scale Factor 1.5		
Start Form On	<input checked="" type="checkbox"/> New	<input checked="" type="checkbox"/> Edit	
OK			

Platforms

This screen lets you set the Scaling and Startup properties for the various supported platforms.

Start Form Options

The following options enable you to specify which form is displayed first either when you create a New Record or Edit an existing Record. You can have both use the same form or you can use different forms for each. Additionally, because of the different resolutions available on the different platforms, we made it possible to specify a different Start Form for each option on each platform. This means you could have a large form that has

more fields in the HandBase Desktop but have a smaller form for the handheld platform.

NOTE: If you do not specify ANY form for these Start Form options then the standard HandBase screens will be displayed. However if you do not specify anything then you will not have any way to access the forms you created. It can however be useful to not specify one for both. For example, you may want the standard HandBase form for entering a new record but then want a custom form for viewing your records.

The Scaling options enable you to set different Scaling for each platform. This makes it possible to use one set of forms for all platforms and just have the forms scale differently. Or you can use different sets of forms for each platform and then set the Scaling to 1 for each of them so no scaling is done.

Palm OS

Scale Factor: You can specify the scaling of this form. The default is 1.0

Start Form On

This option enables you to specify which Start Form to use on the Palm OS handheld. The following two options are available.

New Record

Select this to specify that this form it to be used when creating a New Record on the Palm OS handheld.

Edit Record

Select this to specify that this form it to be used when you Edit a Record on the Palm OS handheld.

PPC

Scale Factor: You can specify the scaling of this form on Windows Mobile Classic/Professional (Pocket PC) devices. The default is 1.5

Start Form On

This option enables you to specify which Start Form to use on the Windows Mobile Classic/Professional (Pocket PC) device. The following two options are available.

New Record

Select this to specify that this form it to be used when creating a New Record on the Pocket PC device.

Edit Record

Select this to specify that this form it to be used when you Edit a Record on the Pocket PC device.

Desktop

Scale Factor: You can specify the scaling of this form on Windows Desktop/Laptop computers. The default is 2.0

Start Form On

This option enables you to specify which Start Form to use on the Windows Desktop/Laptop computer. The following two options are available.

New Record

Select this to specify that this form it to be used when creating a New Record on the Desktop computer.

Edit Record

Select this to specify that this form it to be used when you Edit a Record on the Desktop computer.

SP

Scale Factor: You can specify the scaling of this form on Windows Mobile Standard (Smartphone) devices. The default is 1.5

Start Form On

This option enables you to specify which Start Form to use on the Windows Mobile Standard (Smartphone) device. The following two options are available.

New Record

Select this to specify that this form it to be used when creating a New Record on the Smartphone device.

Edit Record

Select this to specify that this form it to be used when you Edit a Record on the Smartphone device.

Start Form Options

The following options enable you to specify which form is displayed first either when you create a New Record or Edit an existing Record. You can have both use the same form or you can use different forms for each. Additionally, because of the different resolutions available on the different platforms, we made it possible to specify a different Start Form for each option on each platform. This means you could have a large form that has more fields in the HanDBase Desktop but have a smaller form for the handheld platform.

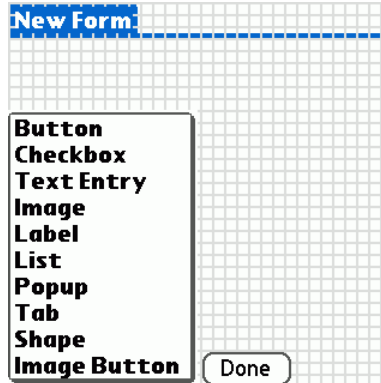
NOTE: If you do not specify ANY form for these Start Form options then the standard HanDBase screens will be displayed. However if you do not specify anything then you will not have any way to access the forms you created. It can however be useful to not specify one for both. For example, you may want the standard HanDBase form for entering a new record but then want a custom form for viewing your records.

Form Controls

Form Controls are what make the forms you create useable. They enable you to view data in a particular way, enter data in a different way than the standard HanDBase form and basically create an interface that is more "User Friendly".

Following is a list of the Controls available in HanDBase Forms. The settings will be the same regardless of whether you are designing on the Desktop or the Palm OS handheld.

On the handheld you add controls by tapping the (New) button/menu in the lower left hand corner. A menu will pop up allowing you to select the control you wish to add to this form. On the handheld you will also see buttons/menus for (Details) and (Done). Selecting (Details) will display the details screen for the currently selected Control. If no control is selected you will see the details for the Form itself. If you tap the (Done) you will be returned to the Select Form Screen.



When you select from the Toolbar or from the Menu a control will be placed on the form for you to begin editing.

In the Forms Desktop the Control Details dialog will automatically display the options available to you to modify while at the same time showing the form. The changes are made to the Control as you make them in the Details dialog so there is no need to save them and no way to cancel any changes you do make.

On the Palm OS device the Control Details screen will automatically open when you select a new control. After you are done editing the Control Details on the handheld you can tap the (Ok) button to save the changes to that control. You can tap (Cancel) to discard your changes and return to the Form Design screen. You can also tap the (Delete) button to delete that control.

After you have added controls and, on the handheld modified the parameters, you can then drag the control to the location on the screen you want it placed, if desired.

NOTE: If you do not want to drag and drop to position your controls you can specify the *Left Origin* and *Top Origin* parameters on the Layout tab. That also allows for more precise positioning of the controls.

Following is a list of all the supported Controls in HanDBase Forms. The available options for each control are explained below. Some options will only apply or be available on either the Desktop, Palm OS or Pocket PC/Windows Mobile handheld. Those options will be designated by either (Desktop), (Palm OS) or (Pocket PC) respectively. Additionally, the HanDBase fields that the control will work with are specified. Some controls cannot have certain field types associated with them.

Button

Buttons can be used in a number of ways. They can be associated with a field so that a particular action performed, described below, will modify data in a field in your database. Buttons can also be used to Jump to Other forms or to even, simply close the record, create a new record, access details or delete a record, if you do not want to use the standard buttons and position these yourself.

Supported Field Types

Text, Integer, Float, Popup, Unique, Date, Time, Link, Linked, DB Popup, Calculated, Relationship, Conditional, External

General Options

Data Source

This option specifies the Field from your HanDBase database you want to associate with this control.

Caption Source

Select which of the following you want as the "Caption" for this control.

Field Name

Select this to specify the Field Name, of the field specified as the Data Source, as the Caption.

Field Value

Select this to specify the Field Value, of the field specified as the Data Source, as the Caption.

Other

Select this to specify some other value as the Caption. This is useful if you do not specify a Data Source and want this to be a simple label. If you select this an additional option, *Caption:* will appear.

Caption

If you selected Other as the Field Name then you will specify your other value here.

Layout Options

Left Origin

Specify the position, from the left side of the form, you want this control to be placed.

Top Origin

Specify the position, from the top side of the form, you want this control to be placed.

Width

Specify the Width, in pixels, of this Button.

Height

Specify the Height, in pixels, of this Button.

Attributes Options

Font

Specify which Font you want to use for this Button's Caption. There is a selector to the Right that allows you to also set the Color for this Text.

Type(Palm OS)

Specify the Type of button you wish to use. Following are the available types:

Button - This is a standard button type.

Push Btn - This button type will stay selected when tapped.

Color

Use this option to specify the Background color of this button.

Frame

Use this option to specify the type of Frame you want for your button. The following options are available.

None - Selecting this will have NO frame around your button but you will still be able to tap the Text to select this button.

Standard - Selecting this will, on the Palm OS platform, display a standard, rounded, button.

Bold - Selecting this will, on the Palm OS platform, display a rounded button with a thicker line.

Rectangle - Selecting this will display a Rectangular button.

Visible

Use this option to display or hide the control. The following options are available.

Yes – Selecting this will display the control on the form.

No – Selecting this will not display the control on the form.

Conditionally – Selecting this will only display the control on the form if the field specified has a value in it. Select the field that you want to base the *Field has non-zero value* option on. Choosing this option means that the control you specify will only display if the field selected has some value in it. You can use this for things such as displaying different buttons depending on a value so that you could jump to a different form or display a different value depending on the condition.

Actions

Buttons are one of two controls that can have Actions associated with them. There are two possible Actions. Meaning, when you tap this button it will first perform Action 1 and then perform Action 2. Using both Actions is useful if you want to do something like Saving an Closing the Record but then going to the next record automatically.

Action 1

This is the First Action that will be performed. See the list of available Actions below.

Action 2

This is the Second Action that will be performed. See the list of available Actions below.

Available Actions

Do Nothing - When this control is selected NO action will be performed.

Jump to Form - When this control is selected, on the form, you will jump to the form specified.

Return to Form - When this control is selected, on the form, you will be returned to the form you were previously on.

Create Record - When this control is selected a New Record will be created, saving changes in the current record first. This is similar to tapping the New button in the standard HanDBase interface.

Delete Record - When this control is selected the current record will be deleted and you will be returned to the HanDBase List View screen.

Go to First Record - When this control is selected the first record in this database will be displayed.

Go to Last Record - When this control is selected the Last record in this database will be displayed.

Go to Previous Record - When this control is selected the record Prior to this one in the database will be displayed. This has the same functionality as tapping the - indicator in the upper right hand corner of the standard HanDBase Interface. This is useful for creating you own controls to move back and forth among records.

Go to Next Record - When this control is selected the record After this one in the database will be displayed. This has the same functionality as tapping the + indicator in the upper right hand corner of the standard HanDBase Interface. This is useful for creating you own controls to move back and forth among records.

Follow Link/Rel/External - This control can be associated with a Link, Linked, DB Popup Relationship or External field from your database. If associated with a Link, Linked or Relationship field then selecting this control will follow the appropriate Link or Relationship to the database specified in that field's setup. If associated with a DB Popup field it will take you to the associated database where you can select a record to bring data back from. If this is associated with an External field then selecting this control will launch the external plugin in the same way it would if you had tapped that field in the standard HanDBase interface.

Clear - When this control is selected it will Clear the value from the field you have associated with this control using the Data Source option.

Set Value to Caption - When this control is selected it will set the value of the field you have associated with this control, using the Data Source option, to whatever the Caption for this control is.

Append Caption to Value - When this control is selected it will append whatever the caption of this control is to the value of the field you have associated with this control, using the Data Source option.

An example of using this function would be to create a number keypad and set the caption of each to a different number. Then when tapped it would set the value of that field to a that number. If you use a Field or Label field to also display that same field's value you'll see the updates you make automatically.

Save and Close - When this control is selected it will Save the current record and close this New or Edit Record form screen.

Goto Details - When this control is selected it will display this record'd Details screen. From there you can set manual alarms, enable manual encryption or delete this record.

Print Record - When this control is selected it will Print the current record.

Export Record - When this control is selected it will export this record to the MemoPad.

Beam Record – When this control is selected it will beam the currently open record to another device via Infrared.

Copy Record to New - When this control is selected it will save the current record and create a New record with the same values as the record you were in.

Copy Record to... - When this control is selected it will display a dialog enabling you to Copy this record to another database

NOTE: The database you want to copy to must have the Same database structure as the one you are copying from.

Move Record to... - When this control is selected it will display a dialog enabling you to Move this record to another database

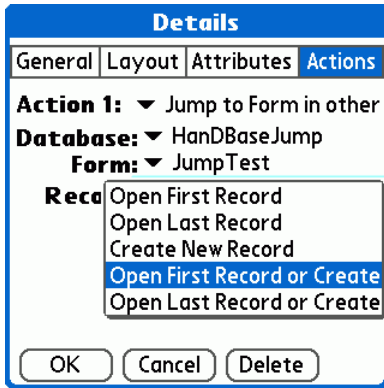
NOTE: The database you want to move to must have the Same database structure as the one you are moving from

Select Date - When this control is selected it will display the standard HanDBase Choose Date Screen so you can select a Date to be entered in the field you have associated with this control.

Select Time - When this control is selected it will display the standard HanDBase Choose Time Screen so you can select the Time to be entered in the field you have associated with this control.

Increment Value - When this control is selected it will increment the numeric value in the field associated this control.

Decrement Value - When this control is selected it will decrement the numeric value in the field associated this control.



Jump to Form in other DB - When this control is selected it will jump directly to a form in another database, bypassing the List View of that database. The Source option for this control must be set to be a Link, Linked or Relationship field. This allows you to have a child database that stores additional data and make adding or editing records in that child database seamless. The following options are available.

Database: Select the database that you want to jump to when this control is selected.

Form: Select the Form, in the database selected above, that you wish to jump to when this control is selected.

Record: Select the Record option you wish to take place when this control is selected and the program jumps to the form specified above

Cancel - When this control is selected it will exit the Edit Record screen discarding any changes you've made. This option allows you to add your own cancel button to the form and not use the default one.

Edit Popup List - When this control is selected it will take you to the Edit Record screen for the field specified in the Source option so you can change the popup values for the field.

Show Popup List - When this control is selected it will show the popup list for the field specified in the Source option so you can select a value from it. This allows you to replace the popup control with a button.

Cut - When this control is selected it will Copy the currently selected text in the field specified by Source to the clipboard so it can be pasted to another field or another application.

Copy - When this control is selected it will Cut the currently selected text in the field specified by Source to the clipboard so it can be pasted to another field or another application.

Paste - When this control is selected it will paste the current data in the clipboard into the field specified by the Source option.

Select All - When this control is selected it will select all of the text in the field specified by Source so that the data can be copied or cut.

Record Text to Clipboard - When this control is selected it will copy all of the fields in this record to the clipboard as text so that it can be pasted into another application.

Backspace - When this control is selected it will enter a Backspace character in the field specified in the Source option, deleting the characters.

Set Focus to Control- When this control is selected it will set the focus to the control specified in the "Control:" option. This is useful as a Second action where the first might enter a value and then you want to jump to another control to edit it.

Checkbox

This control enables you to Check or Un-check Checkboxes. If you associate this control with a Field in your database then changes made will be reflected there also. You can also use this to ONLY display the value of a checkbox but not make it editable.

Supported Field Types

Checkbox

General Options

Data Source

This option specifies the Field from your HanDBase database you want to associate with this control.

Caption Source

Select which of the following you want as the "Caption" for this control.

Field Name

Select this to specify the Field Name, of the field specified as the Data Source, as the Caption.

Field Value

Select this to specify the Field Value, of the field specified as the Data Source, as the Caption.

Other

Select this to specify some other value as the Caption. If you select this, an additional option, *Caption:* will appear.

Caption

If you selected Other as the Field Name then you will specify your other value here.

Layout Options

Left Origin

Specify the position, from the left side of the form, you want this control to be placed.

Top Origin

Specify the position, from the top side of the form, you want this control to be placed.

Width

Specify the Width, in pixels, of this Control.

Height

Specify the Height, in pixels, of this Control.

Attributes Options

Font

Specify which Font you want to use for this CheckBox's Caption. There is a selector to the Right that allows you to also set the Color for this Text.

Editable

If you leave this item checked, which is the default, then you will be able to make changes to this control, checking it or un-checking it as necessary. The "data" will be reflected in the specified field. You can also un-check this option so that it can only be used to View data and not to modify the record.

Visible

Use this option to display or hide the control. The following options are available.

Yes – Selecting this will display the control on the form.

No – Selecting this will not display the control on the form.

Conditionally – Selecting this will only display the control on the form if the field specified has a value in it. Select the field that you want to base the *Field has non-zero value* option on. Choosing this option means that the control you specify will only display if the field selected has some value in it. You can use this for things such as displaying different buttons depending on a value so that you could jump to a different form or display a different value depending on the condition.

Actions

None Available

Text Entry

The Text Entry Control is used to be able to enter textual or numeric data into any of the supported field types through a form. You can also use this to view existing data in a record and have the ability to modify it if necessary.

Supported Field Types

Text, Integer, Float, Note, DB Popup

General Options

Data Source

This option specifies the Field from your HanDBase database you want to associate with this control.

Layout Options

Left Origin

Specify the position, from the left side of the form, you want this control to be placed.

Top Origin

Specify the position, from the top side of the form, you want this control to be placed.

Width

Specify the Width, in pixels, of this control.

Lines

Specify the number of Lines you want displayed. This makes it possible to enter a large amount of text, possibly to be stored in a Text or Note field, in this Control.

Attributes Options

Font

Specify which Font you want to use for this data entered into this control. There is a selector to the Right that allows you to also set the Color for this Text.

NOTE: Currently the font color is not supported on the Palm OS or Pocket PC handhelds. If you set this color it will only appear in that color in the HanDBase Desktop.

Editable

If you leave this item checked, which is the default, then you will be able to make changes to this control, checking it or unchecking it as necessary. The "data" will be reflected in the specified field. You can also un-check this option so that it can only be used to View data and not to modify the record.

Visible

Use this option to display or hide the control. The following options are available.

Yes – Selecting this will display the control on the form.

No – Selecting this will not display the control on the form.

Conditionally – Selecting this will only display the control on the form if the field specified has a value in it. Select the field that you want to base the *Field has non-zero value* option on. Choosing this option means that the control you specify will only display if the field selected has some value in it. You can use this for things such as displaying different buttons depending on a value so that you could jump to a different form or display a different value depending on the condition.

Justify

Use this option to specify the "Justification" of the text in this field. Following are your options.

Left - Select this option to Justify the text to the Left.

Center - Select this option to Justify the text in the Center of the field

Right - Select this option to Justify the text to the Right.

Underline

If you leave this option checked, which is the default, then this field will have the dashed lines to indicate each line of this Field. If you un-check this option then your Field will not have the dashed line indicators, enabling a cleaner interface for data entry.

Auto Shift

If you leave this option checked, which is the default, then when you set focus to this field the first letter you enter will be capitalized. Additionally the Shift Indicator will be displayed in the Lower Right corner.

NOTE: This option only applies to the Palm OS handhelds. Setting or unsetting this option will have no effect on the Pocket PC or in the HanDBase Desktop.

Scroll Bar

If you enable this option, it is unchecked by default, then your Field will have a scroll bar. This makes it possible to keep the number of Lines set to a smaller number so the field does not take up much screen space but still be able to enter large amounts of text.

Actions

None Available

Image

This control enables you to display or capture an image in your form. This is used in the same way as the standard Image field. It is a 100 x 100 pixel box. This is useful for capturing Signatures.

Supported Field Types

Image

General Options

Data Source

This option specifies the Field from your HanDBase database you want to associate with this control.

Layout Options

Left Origin

Specify the position, from the left side of the form, you want this control to be placed.

Top Origin

Specify the position, from the top side of the form, you want this control to be placed.

Attributes Options

Visible

Use this option to display or hide the control. The following options are available.

Yes – Selecting this will display the control on the form.

No – Selecting this will not display the control on the form.

Conditionally – Selecting this will only display the control on the form if the field specified has a value in it. Select the field that you want to base the *Field has non-zero value* option on. Choosing this option means that the control you specify will only display if the field selected has some value in it. You can use this for things such as displaying different buttons depending on a value so that you could jump to a different form or display a different value depending on the condition.

Actions

None Available

Label

The Field Control is used as a "Display" control. It will either display a static value, similar to the Field Name or Heading field in the standard HanDBase interface, or it can display a value from a field. Using it for the latter makes it possible to View data but NOT make any changes to that data.

Supported Field Types

Text, Integer, Float, Popup, Unique, Date, Time, Link, Linked, Heading, DB Popup, Calculated, Relationship, Conditional, External

General Options

Data Source

This option specifies the Field from your HanDBase database you want to associate with this control.

Caption Source

Select which of the following you want as the "Caption" for this control.

Field Name - Select this to specify the Field Name, of the field specified as the Data Source, as the Caption.

Field Value - Select this to specify the Field Value, of the field specified as the Data Source, as the Caption.

Other - Select this to specify some other value as the Caption. This is useful if you do not specify a Data Source and want this to be a simple label. If you select this an additional option, *Caption:* will appear.

Caption

If you selected Other as the Field Name then you will specify your other value here.

Layout Options

Left Origin

Specify the position, from the left side of the form, you want this control to be placed.

Top Origin

Specify the position, from the top side of the form, you want this control to be placed.

Width

Specify the Width, in pixels, of this Button.

Lines

Specify the number of lines, high, you want this Label to be. Setting it to a higher amount makes it possible to see more data, possibly from a Text or Note field, in this Label.

Attributes Options

Font

Specify which Font you want to use for this Label's Caption. There is a selector to the Right that allows you to also set the Color for this Text.

Visible

Use this option to display or hide the control. The following options are available.

Yes – Selecting this will display the control on the form.

No – Selecting this will not display the control on the form.

Conditionally – Selecting this will only display the control on the form if the field specified has a value in it. Select the field that you want to base the *Field has non-zero value* option on. Choosing this option means that the control you specify will only display if the field selected has some value in it. You can use this for things such as displaying different buttons depending on a value so that you could jump to a different form or display a different value depending on the condition.

Actions

None Available

List

This control is used to create a List box that will make it possible to select an item from a popup list defined for the field specified as your Data Source. For the Date and Time fields you will see the popup list you would normally see in the standard HanDBase interface with these options:

Date: *Today, Tomorrow, One Week, No Date and Choose Date.* Selecting Choose Date will bring up the standard HanDBase Choose Date Screen.

Time: *Current Time, No Time, and Choose Time.* Selecting Choose Time will bring up the standard HanDBase Time Picker Screen.

Supported Field Types

Text, Integer, Float, Popup, Date, Time, Note

General Options

Data Source:

This option specifies the Field from your HanDBase database you want to associate with this control.

Layout Options

Left Origin

Specify the position, from the left side of the form, you want this control to be placed.

Top Origin

Specify the position, from the top side of the form, you want this control to be placed.

Width

Specify the Width, in pixels, of this Control.

Visible Items

Specify the number of items you want to see in this list. The minimum is 2. If you enter less than 2 you will not be able to scroll to see additional items. If you enter 2 or more and there are more items in the list than the number you specify as visible then scrolling arrows will be shown to the Right of the List to allow for scrolling through your items.

Attributes Options

Font

Specify which Font you want to use for this control. There is a selector to the Right that allows you to also set the Color for this Text.

Editable

If you leave this item checked, which is the default, then you will be able to make changes to the data associated with this control, ie picking items from the list. If you uncheck this option then if this control is associated with a field, the this control will simply highlight which item in the list is already selected for the record.

Color

Use this option to specify the Background color of this List Box.

Visible

Use this option to display or hide the control. The following options are available.

Yes – Selecting this will display the control on the form.

No – Selecting this will not display the control on the form.

Conditionally – Selecting this will only display the control on the form if the field specified has a value in it. Select the field that you want to base the *Field has non-zero value* option on. Choosing this option means that the control you specify will only display if the field selected has some value in it. You can use this for things such as displaying different buttons depending on a value so that you could jump to a different form or display a different value depending on the condition.

Actions

None Available

Popup

This control is used to create a Popup list that will make it possible to select an item from a popup list defined for the field specified as your Data Source. If you specify the Field Value for the Caption of this control then when you select from the Popup list the item selected will be displayed for that control. For the Date and Time fields you will see the popup list you would normally see in the standard HanDBase interface with these options. If you specify the Field Value to be the Caption then when you select a Date or Time that will be displayed for that control.

Date: *Today, Tomorrow, One Week, No Date and Choose Date.* Selecting Choose Date will bring up the standard HanDBase Choose Date Screen.

Time: *Current Time, No Time, and Choose Time.* Selecting Choose Time will bring up the standard HanDBase Time Picker Screen.

If you specify the Data Source for this control to be a DB Popup field then when you tap this field you will be taken to the other database specified for that field so you can select your item to be brought back and stored in this database.

Supported Field Types

Text, Integer, Float, Popup, Date, Time, Note, DBPopup

General Options

Data Source

This option specifies the Field from your HanDBase database you want to associate with this control.

Caption Source

Select which of the following you want as the "Caption" for this control.

Field Name - Select this to specify the Field Name, of the field specified as the Data Source, as the Caption.

Field Value - Select this to specify the Field Value, of the field specified as the Data Source, as the Caption.

Other - Select this to specify some other value as the Caption. This is useful if you do

not specify a Data Source and want this to be a simple label. If you select this an additional option, *Caption:* will appear.

Caption

If you selected Other as the Field Name then you will specify your other value here.

Layout Options

Left Origin

Specify the position, from the left side of the form, you want this control to be placed.

Top Origin

Specify the position, from the top side of the form, you want this control to be placed.

Width

Specify the Width, in pixels, of this Button.

Height

Specify the Height, in pixels, of this Button.

Attributes Options

Font

Specify which Font you want to use for this Popup's Caption. There is a selector to the Right that allows you to also set the Color for this Text.

Editable

If you leave this item checked, which is the default, then you will be able to choose from the Popup list of the Field this control is associated with. You can also un-check this option so that it can only be used to View data, if you have this control's Caption set to display the Field Value for the field it is associated with, and not to modify the record.

Visible

Use this option to display or hide the control. The following options are available.

Yes – Selecting this will display the control on the form.

No – Selecting this will not display the control on the form.

Conditionally – Selecting this will only display the control on the form if the field specified has a value in it. Select the field that you want to base the *Field has non-zero value* option on. Choosing this option means that the control you specify will only display if the field selected has some value in it. You can use this for things such as displaying different buttons depending on a value so that you could jump to a different form or display a different value depending on the condition.

Actions

None Available

Tab

Tabs are one of the more advanced Control types. They are generally used in Groups and you will also be using Multiple Forms to make them work. When you add a Tab control selecting it in the designer will NOT show multiple screen views depending on which you select on that form. However the end

result will appear to be this way. What you will do is create multiple forms, using the same sets of Tabs. **NOTE:** You can use the Copy option to make exact duplicates of a single form you create so the tabs are in the exact same position.

You will then make the Action for the Tab(s) to be that they Jump to Another form. Then when you tap the Tab you are actually taken to another of your exact same forms but one that has data below, above, to the left or right, that is different and specific for each tab.

Supported Field Types

Text, Integer, Float, Popup, Unique, Date, Time, Link, Linked, DB Popup, Calculated, Relationship, Conditional, External

General Options

Data Source

This option specifies the Field from your HanDBase database you want to associate with this control.

Caption Source

Select which of the following you want as the "Caption" for this control.

Field Name - Select this to specify the Field Name, of the field specified as the Data Source, as the Caption.

Field Value - Select this to specify the Field Value, of the field specified as the Data Source, as the Caption.

Other - Select this to specify some other value as the Caption. This is useful if you do not specify a Data Source and want this to be a simple label. If you select this an additional option, *Caption:* will appear.

Caption

If you selected Other as the Field Name then you will specify your other value here.

Layout Options

Left Origin

Specify the position, from the left side of the form, you want this control to be placed.

Top Origin

Specify the position, from the top side of the form, you want this control to be placed.

Width

Specify the Width, in pixels, of this Button.

Height

Specify the Height, in pixels, of this Button.

Attributes Options

Font

Specify which Font you want to use for this Tab's Caption. There is a selector to the Right that allows you to also set the Color for this Text.

Active

This option is used to specify whether this tab is the "Active" one on this form. When enabled the tab will NOT have a lower line so it looks like a standard Tab, indicating that the data below

it is associated with this tab. You will only want to have ONE Active Tab per Tab Group, per Form

Color

Use this option to specify the Background color of this Tab.

Visible

Use this option to display or hide the control. The following options are available.

Yes – Selecting this will display the control on the form.

No – Selecting this will not display the control on the form.

Conditionally – Selecting this will only display the control on the form if the field specified has a value in it. Select the field that you want to base the *Field has non-zero value* option on. Choosing this option means that the control you specify will only display if the field selected has some value in it. You can use this for things such as displaying different buttons depending on a value so that you could jump to a different form or display a different value depending on the condition.

Direction

This option enables you to specify the "Direction" of the tab. This makes it possible to position the Tab practically anywhere on the screen. Following are the directions supported and how they affect the way the tabs are displayed.

North - These tabs would have the rounded edge facing the top of the form. These tabs would generally be used at the the top of the form with the other fields below them.

South - These tabs would have the rounded edge facing the bottom of the form. These tabs would generally be used at the the bottom of the form with the other fields above them.

East - These tabs would have the rounded edge facing the right side of the form. These tabs would generally be used at the the right side of the form with the other fields to the left of them. Additionally these tabs are better used for fitting More tabs on the form because they can be easily "stacked" on top of each other, taking up less room.

West - These tabs would have the rounded edge facing the left side of the form. These tabs would generally be used at the the left side of the form with the other fields to the right of them. Additionally these tabs are better used for fitting More tabs on the form because they can be easily "stacked" on top of each other, taking up less room.

Actions

Tabs are one of two controls that can have Actions associated with them. There are two possible Actions. Meaning, when you tap this button it will first perform Action 1 and then perform Action 2. Using both Actions is useful if you want to do something like Saving an Closing the Record but then going to the next record automatically.

Action 1:

This is the First Action that will be performed. See the list of available Actions below.

Action 2:

This is the Second Action that will be performed. See the list of available Actions below.

Available Actions

Do Nothing - When this control is selected NO action will be performed.

Jump to Form - When this control is selected, on the form, you will jump to the form specified.

Return to Form - When this control is selected, on the form, you will be returned to the form you were previously on.

Create Record - When this control is selected a New Record will be created, saving changes in the current record first. This is similar to tapping the New button in the standard HanDBase interface.

Delete Record - When this control is selected the current record will be deleted and you will be returned to the HanDBase List View screen.

Go to First Record - When this control is selected the first record in this database will be displayed.

Go to Last Record - When this control is selected the Last record in this database will be displayed.

Go to Previous Record - When this control is selected the record Prior to this one in the database will be displayed. This has the same functionality as tapping the - indicator in the upper right hand corner of the standard HanDBase Interface. This is useful for creating you own controls to move back and forth among records.

Go to Next Record - When this control is selected the record After this one in the database will be displayed. This has the same functionality as tapping the + indicator in the upper right hand corner of the standard HanDBase Interface. This is useful for creating you own controls to move back and forth among records.

Follow Link/Rel/External - This control can be associated with a Link, Linked, DB Popup Relationship or External field from your database. If associated with a Link, Linked or Relationship field then selecting this control will follow the appropriate Link or Relationship to the database specified in that field's setup. If associated with a DB Popup field it will take you to the associated database where you can select a record to bring data back from. If this is associated with an External field then selecting this control will launch the external plugin in the same way it would if you had tapped that field in the standard HanDBase interface.

Clear - When this control is selected it will Clear the value from the field you have associated with this control using the Data Source option.

Set Value to Caption - When this control is selected it will set the value of the field you have associated with this control, using the Data Source option, to whatever the Caption for this control is.

Append Caption to Value - When this control is selected it will append whatever the caption of this control is to the value of the field you have associated with this control, using the Data Source option.

An example of using this function would be to create a number keypad and set the caption of each to a different number. Then when tapped it would set the value of that field to a that number. If you use a Field or Label field to also display that same field's value you'll see the updates you make automatically.

Save and Close - When this control is selected it will Save the current record and close this New or Edit Record form screen.

Goto Details - When this control is selected it will display this record'd Details screen. From there you can set manual alarms, enable manual encryption or delete this record.

Print Record - When this control is selected it will Print the current record.

Export Record - When this control is selected it will export this record to the MemoPad.

Beam Record – When this control is selected it will beam the currently open record to another device via Infrared.

Copy Record to New - When this control is selected it will save the current record and create a New record with the same values as the record you were in.

Copy Record to... - When this control is selected it will display a dialog enabling you to Copy this record to another database

NOTE: The database you want to copy to must have the Same database structure as the one you are copying from.

Move Record to... - When this control is selected it will display a dialog enabling you to Move this record to another database

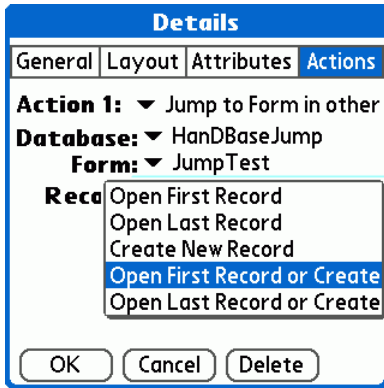
NOTE: The database you want to move to must have the Same database structure as the one you are moving from

Select Date - When this control is selected it will display the standard HanDBase Choose Date Screen so you can select a Date to be entered in the field you have associated with this control.

Select Time - When this control is selected it will display the standard HanDBase Choose Time Screen so you can select the Time to be entered in the field you have associated with this control.

Increment Value - When this control is selected it will increment the numeric value in the field associated this control.

Decrement Value - When this control is selected it will decrement the numeric value in the field associated this control.



Jump to Form in other DB - When this control is selected it will jump directly to a form in another database, bypassing the List View of that database. The Source option for this control must be set to be a Link, Linked or Relationship field. This allows you to have a child database that stores additional data and make adding or editing records in that child database seamless. The following options are available.

Database: Select the database that you want to jump to when this control is selected.

Form: Select the Form, in the database selected above, that you wish to jump to when this control is selected.

Record: Select the Record option you wish to take place when this control is selected and the program jumps to the form specified above

Cancel - When this control is selected it will exit the Edit Record screen discarding any changes you've made. This option allows you to add your own cancel button to the form and not use the default one.

Edit Popup List - When this control is selected it will take you to the Edit Record screen for the field specified in the Source option so you can change the popup values for the field.

Show Popup List - When this control is selected it will show the popup list for the field specified in the Source option so you can select a value from it. This allows you to replace the popup control with a button.

Cut - When this control is selected it will Copy the currently selected text in the field specified by Source to the clipboard so it can be pasted to another field or another application.

Copy - When this control is selected it will Cut the currently selected text in the field specified by Source to the clipboard so it can be pasted to another field or another application.

Paste - When this control is selected it will paste the current data in the clipboard into the field specified by the Source option.

Select All - When this control is selected it will select all of the text in the field specified by Source so that the data can be copied or cut.

Record Text to Clipboard – When this control is selected it will copy all of the fields in this record to the clipboard as text so that it can be pasted into another application.

Backspace - When this control is selected it will enter a Backspace character in the field specified in the Source option, deleting the characters.

Set Focus to Control- When this control is selected it will set the focus to the control specified in the “Control:” option. This is useful as a Second action where the first might enter a value and then you want to jump to another control to edit it.

Shape

The shape control enables you to draw a shape on your form. This shape could be used to group or separate sections of data on your form.

Supported Field Types

None

General Options

Shape:

Currently there are two possible shapes to select from for this control.

Line - Draws a line on the form. Depending on the Layout Options that are set this line can be Horizontal, Vertical or even Diagonal.

Rectangle - Draws a standard rectangle, or square on the form.

Layout Options

These options will differ depending on whether you select the Line or Rectangle shape. Below are listed both sets of options.

Line

To create a Horizontal Line you will want to specify the SAME point for the Start Y and End Y options.

To create a Vertical Line you will want to specify the SAME point for the Start X and Enc X options.

To create a Diagonal Line you will use different combinations of these depending on which direction you want it to go in.

Start X

Specifies the starting position of the Line on the X axis

Start Y

Specifies the starting position of the Line on the Y axis

End X

Specifies the ending position of the Line on the X axis.

End Y

Species the ending position of the Line on the Y axis.

Rectangle

To create a Rectangle make sure your Width and Height options have different values.

To create a Square make sure your Width and Height options have the same values.

Left Origin

Specify the position, from the left side of the form, you want this control to be placed.

This will place the Upper Left corner of the control at that point.

Top Origin

Specify the position, from the top side of the form, you want this control to be placed. This will place the

Upper Left corner of the control at that point.

Width

Specify the Width, in pixels, of this Shape.

Height

Specify the Height, in pixels, of this Shape.

Attributes Options

Color

Use this option to specify the color of this Shape.

Visible

Use this option to display or hide the control. The following options are available.

Yes – Selecting this will display the control on the form.

No – Selecting this will not display the control on the form.

Conditionally – Selecting this will only display the control on the form if the field specified has a value in it. Select the field that you want to base the *Field has non-zero value* option on. Choosing this option means that the control you specify will only display if the field selected has some value in it. You can use this for things such as displaying different buttons depending on a value so that you could jump to a different form or display a different value depending on the condition.

Actions

None Available

Image Button

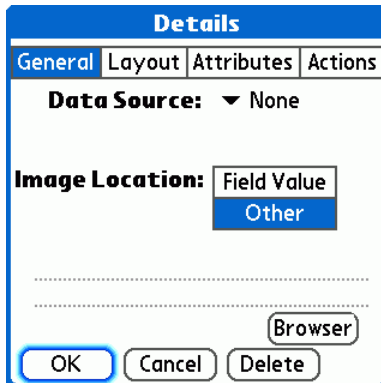


Image Buttons can be used in a number of ways. They can be associated with a field so that a particular action performed, described below, will modify data in a field in your database. Image Buttons can also be used to Jump to Other forms or to even, simply close the record, create a new record, access details or delete a record, if you do not want to use the standard buttons and position these yourself. With the Image Button you can even not use an Action and just use it to display images, whose paths might be stored in another field in your database or to display a static image, such as logo in all your records.

Supported Field Types

Text, Integer, Float, Popup, Unique, Date, Time, Link, Linked, DB Popup, Calculated, Relationship, Conditional, External

General Options

Data Source

This option specifies the Field from your HanDBase database you want to associate with this control.

Image Location

This option lets you specify the location of the image file you want to display. The program will, by default look for images that are stored on your Storage/Memory Card in \Palm\Programs\HanDBase\Images\. If the image you want to display, be it a static image or one

whose file name is stored in another field, is stored in that folder you will only need to specify the filename of the image, not the full path. If the file is stored in a different folder you will need to specify the complete path to the file.

NOTE: By Putting the image files in the default folder you will only need to have the image file name. This allows for cross platform compatibility of this control. You can then put copies of the same image(s) in the default folder locations on the other platforms and the program will find them automatically.

Field Value:

If you choose this option then HanDBase will look for the image file that has it's filename or path and file name entered into the field specified by the Source option and display that image on your form.

Other:

If you choose this option then you will see the text entry lines and be able to enter the filename, or path and filename, of the image file you want displayed on the form. Using this option the same image will be displayed on all forms. This is useful if you want to have a company logo on your forms. You can use the [Browser] button to navigate to a folder on your Storage/Memory Card and select the image you want to display, rather than writing or typing the filename into this option.

Layout Options

Left Origin

Specify the position, from the left side of the form, you want this control to be placed.

Top Origin

Specify the position, from the top side of the form, you want this control to be placed.

Width

Specify the Width, in pixels, of this Button.

Height

Specify the Height, in pixels, of this Button.

Scaled to Fit

If this option is checked then HanDBase will scale the image to fit the Width and Height specified in those options above. If it is not checked then HanDBase will crop the image, starting from the upper left corner of the control.

Attributes Options

Visible

Use this option to display or hide the control. The following options are available.

Yes – Selecting this will display the control on the form.

No – Selecting this will not display the control on the form.

Conditionally – Selecting this will only display the control on the form if the field specified has a value in it. Select the field that you want to base the *Field has non-zero value* option on. Choosing this option means that the control you specify will only

display if the field selected has some value in it. You can use this for things such as displaying different buttons depending on a value so that you could jump to a different form or display a different value depending on the condition.

Actions

Buttons are one of two controls that can have Actions associated with them. There are two possible Actions. Meaning, when you tap this button it will first perform Action 1 and then perform Action 2. Using both Actions is useful if you want to do something like Saving an Closing the Record but then going to the next record automatically.

Action 1

This is the First Action that will be performed. See the list of available Actions below.

Action 2

This is the Second Action that will be performed. See the list of available Actions below.

Available Actions

Do Nothing - When this control is selected NO action will be performed.

Jump to Form - When this control is selected, on the form, you will jump to the form specified.

Return to Form - When this control is selected, on the form, you will be returned to the form you were previously on.

Create Record - When this control is selected a New Record will be created, saving changes in the current record first. This is similar to tapping the New button in the standard HanDBase interface.

Delete Record - When this control is selected the current record will be deleted and you will be returned to the HanDBase List View screen.

Go to First Record - When this control is selected the first record in this database will be displayed.

Go to Last Record - When this control is selected the Last record in this database will be displayed.

Go to Previous Record - When this control is selected the record Prior to this one in the database will be displayed. This has the same functionality as tapping the - indicator in the upper right hand corner of the standard HanDBase Interface. This is useful for creating you own controls to move back and forth among records.

Go to Next Record - When this control is selected the record After this one in the database will be displayed. This has the same functionality as tapping the + indicator in the upper right hand corner of the standard HanDBase Interface. This is useful for creating you own controls to move back and forth among records.

Follow Link/Rel/External - This control can be associated with a Link, Linked, DB Popup Relationship or External field from your database. If associated with a Link, Linked or

Relationship field then selecting this control will follow the appropriate Link or Relationship to the database specified in that field's setup. If associated with a DB Popup field it will take you to the associated database where you can select a record to bring data back from. If this is associated with an External field then selecting this control will launch the external plugin in the same way it would if you had tapped that field in the standard HandBase interface.

Clear - When this control is selected it will Clear the value from the field you have associated with this control using the Data Source option.

Set Value to Caption - When this control is selected it will set the value of the field you have associated with this control, using the Data Source option, to whatever the Caption for this control is.

Append Caption to Value - When this control is selected it will append whatever the caption of this control is to the value of the field you have associated with this control, using the Data Source option.

An example of using this function would be to create a number keypad and set the caption of each to a different number. Then when tapped it would set the value of that field to a that number. If you use a Field or Label field to also display that same field's value you'll see the updates you make automatically.

Save and Close - When this control is selected it will Save the current record and close this New or Edit Record form screen.

Goto Details - When this control is selected it will display this record's Details screen. From there you can set manual alarms, enable manual encryption or delete this record.

Print Record - When this control is selected it will Print the current record.

Export Record - When this control is selected it will export this record to the MemoPad.

Beam Record - When this control is selected it will beam the currently open record to another device via Infrared.

Copy Record to New - When this control is selected it will save the current record and create a New record with the same values as the record you were in.

Copy Record to... - When this control is selected it will display a dialog enabling you to Copy this record to another database

NOTE: The database you want to copy to must have the Same database structure as the one you are copying from.

Move Record to... - When this control is selected it will display a dialog enabling you to Move this record to another database

NOTE: The database you want to move to must have the Same database structure as the one you are moving from

Select Date - When this control is selected it will display the standard HanDBase Choose Date Screen so you can select a Date to be entered in the field you have associated with this control.

Select Time - When this control is selected it will display the standard HanDBase Choose Time Screen so you can select the Time to be entered in the field you have associated with this control.

Increment Value - When this control is selected it will increment the numeric value in the field associated this control.

Decrement Value - When this control is selected it will decrement the numeric value in the field associated this control.

Details

General | Layout | Attributes | **Actions**

Action 1: ▼ Jump to Form in other
Database: ▼ HanDBaseJump
Form: ▼ JumpTest

Records:

- Open First Record
- Open Last Record
- Create New Record
- Open First Record or Create**
- Open Last Record or Create

OK Cancel Delete

Jump to Form in other DB - When this control is selected it will jump directly to a form in another database, bypassing the List View of that database. The Source option for this control must be set to be a Link, Linked or Relationship field. This allows you to have a child database that stores additional data and make adding or editing records in that child database seamless. The following options are available.

Database: Select the database that you want to jump to when this control is selected.

Form: Select the Form, in the database selected above, that you wish to jump to when this control is selected.

Record: Select the Record option you wish to take place when this control is selected and the program jumps to the form specified above

Cancel - When this control is selected it will exit the Edit Record screen discarding any changes you've made. This option allows you to add your own cancel button to the form and not use the default one.

Edit Popup List - When this control is selected it will take you to the Edit Record screen for the field specified in the Source option so you can change the popup values for the field.

Show Popup List - When this control is selected it will show the popup list for the field specified in the Source option so you can select a value from it. This allows you to replace the popup control with a button.

Cut - When this control is selected it will Copy the currently selected text in the field specified by Source to the clipboard so it can be pasted to another field or another application.

Copy - When this control is selected it will Cut the currently selected text in the field specified by Source to the clipboard so it can be pasted to another field or another application.

Paste - When this control is selected it will paste the current data in the clipboard into the field specified by the Source option.

Select All - When this control is selected it will select all of the text in the field specified by Source so that the data can be copied or cut.

Record Text to Clipboard – When this control is selected it will copy all of the fields in this record to the clipboard as text so that it can be pasted into another application.

Backspace - When this control is selected it will enter a Backspace character in the field specified in the Source option, deleting the characters.

Set Focus to Control- When this control is selected it will set the focus to the control specified in the “Control:” option. This is useful as a Second action where the first might enter a value and then you want to jump to another control to edit it.