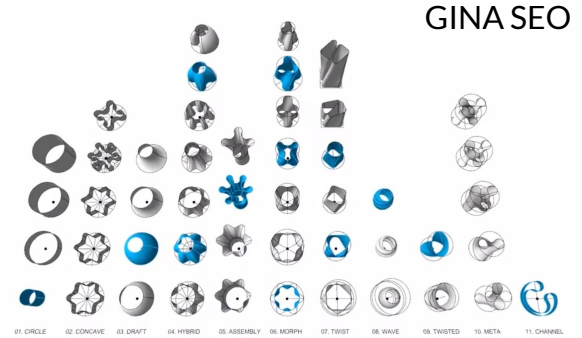
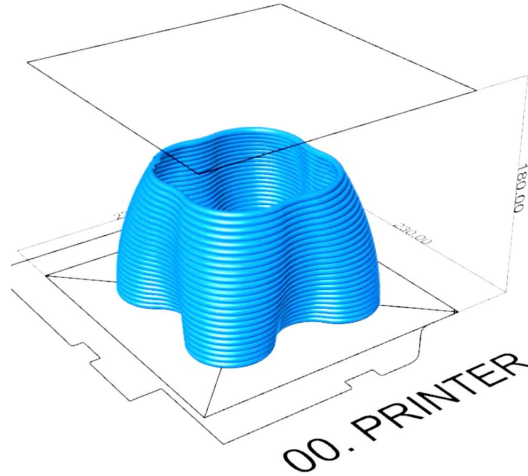
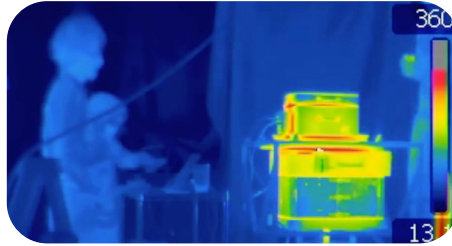
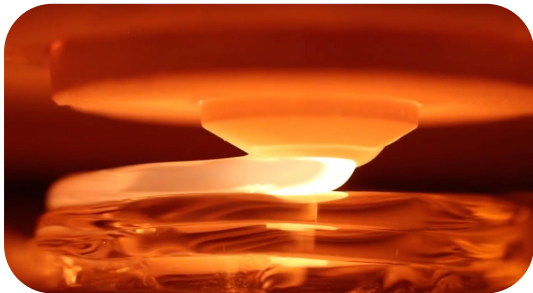


GLASS 3D PRINTING [G3DP2]

NERI OXMAN
[MIT MEDIA LAB \[video\]](#)

additive manufacturing, squirter
thermal system, large-scale
architecture, altering
glass properties



```
4988 G1 X111.08563625342 Y183.618979109313 Z112.1175
4989 G1 X109.09741954451 Y183.761727003744 Z112.14
4990 G1 X107.104013250118 Y183.758725908462 Z112.1625
4991 G1 X105.113886842967 Y183.64661462508 Z112.185
4992 G1 X103.131580450066 Y183.440545280567 Z112.2075
4993 G1 X101.161332395429 Y183.142375534777 Z112.23
4994 G1 X99.2074148766512 Y182.752681119928 Z112.2525
4995 G1 X97.2739233526463 Y182.272885425556 Z112.275
4996 G1 X95.3647707679616 Y181.704803443184 Z112.2975
4997 G1 X93.4838419389583 Y181.05006587242 Z112.32
4998 G1 X91.6348568829177 Y180.31053949045 Z112.3425
4999 G1 X89.8215773040449 Y179.487884802943 Z112.365
```

