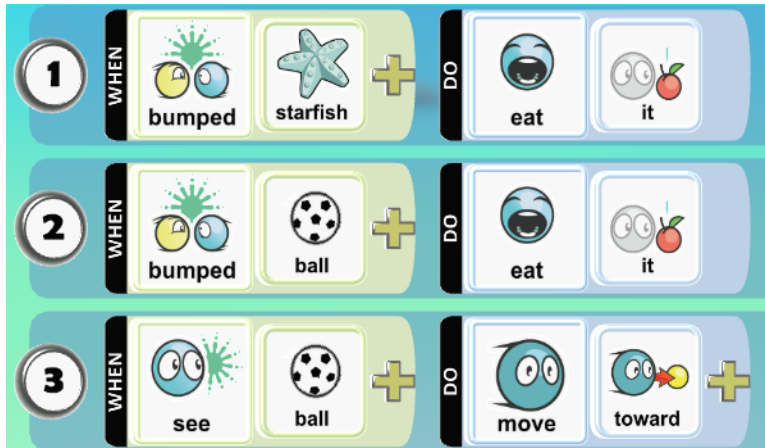


Module 1: Practice Sheet 5

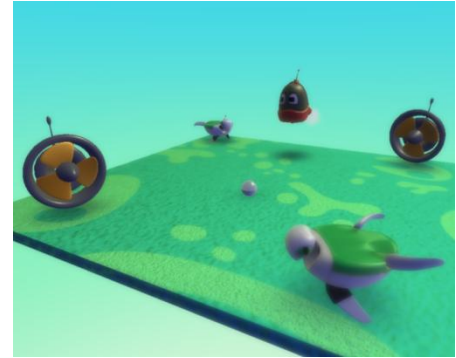
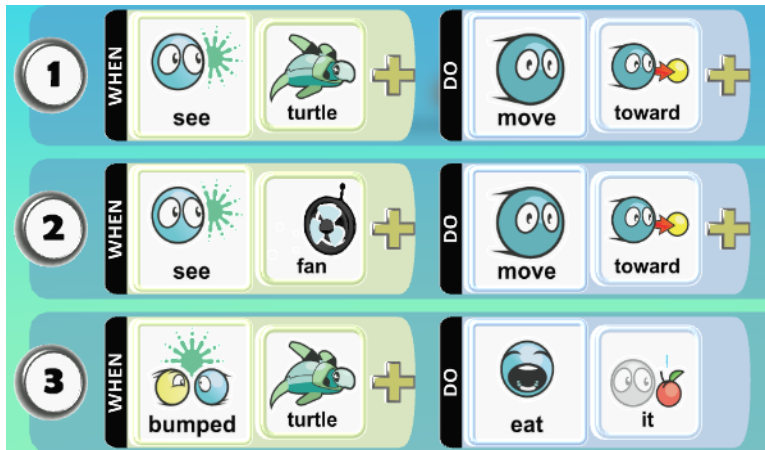
Version of May 29, 2017

Here is a Pursue and Consume program:



- Write a "P" next to each Pursue rule and a "C" next to each Consume rule.
- Draw an arrow from each Pursue rule to its matching Consume rule.
- Write a "U" next to any unpaired Pursue or Consume rule.
- With these rules, what will the kodu eat first?
 - A starfish
 - A ball
 - Whatever thing is closest
 - It will get stuck and won't eat anything
- When will the kodu eat its first starfish?
 - A starfish is the first thing it will eat
 - It will eat a starfish after it eats its first ball
 - It will eat a starfish once all the balls are gone
 - It will never eat a starfish
- When will the kodu stop moving?
 - It will stop when all the starfish have been eaten and only balls are left
 - It will stop when all the balls have been eaten and only starfish are left
 - It will stop when all the starfish and balls have been eaten and nothing is left
 - It will never stop moving

Here is another Pursue and Consume program:



7. Write a “P” next to each Pursue rule and a “C” next to each Consume rule.
8. Draw an arrow from each Pursue rule to its matching Consume rule.
9. Write a “U” next to any unpaired Pursue or Consume rule.
10. With these rules, what will the kodu eat first?
 - a. A turtle
 - b. A fan
 - c. Whatever thing is closest
 - d. It will get stuck and won’t eat anything
11. When will the kodu eat its first turtle?
 - e. A turtle is the first thing it will eat
 - f. It will eat a turtle after it eats its first fan
 - g. It will eat a turtle once all the fans are gone
 - h. It will never eat a turtle
12. When will the kodu eat its first fan?
 - a. A fan is the first thing it will eat
 - b. It will eat a fan after it eats its first turtle
 - c. It will eat a fan once all the turtles are gone
 - d. It will never eat a fan
13. When will the kodu stop moving?
 - a. It will stop when it gets stuck at the first turtle
 - b. It will stop when it gets stuck at the first fan
 - c. It will stop when all the turtles and fans are gone
 - d. It will never stop moving