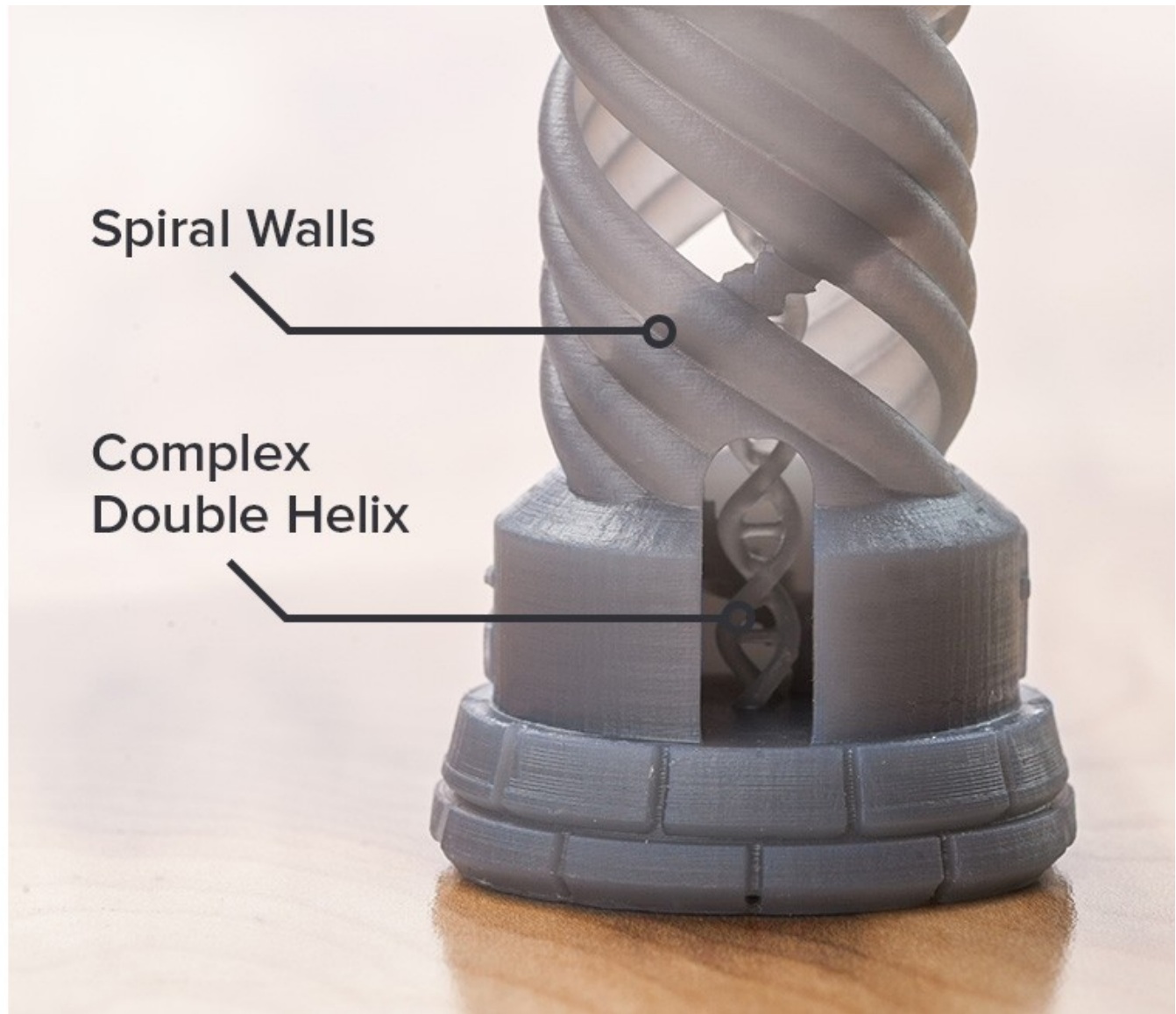


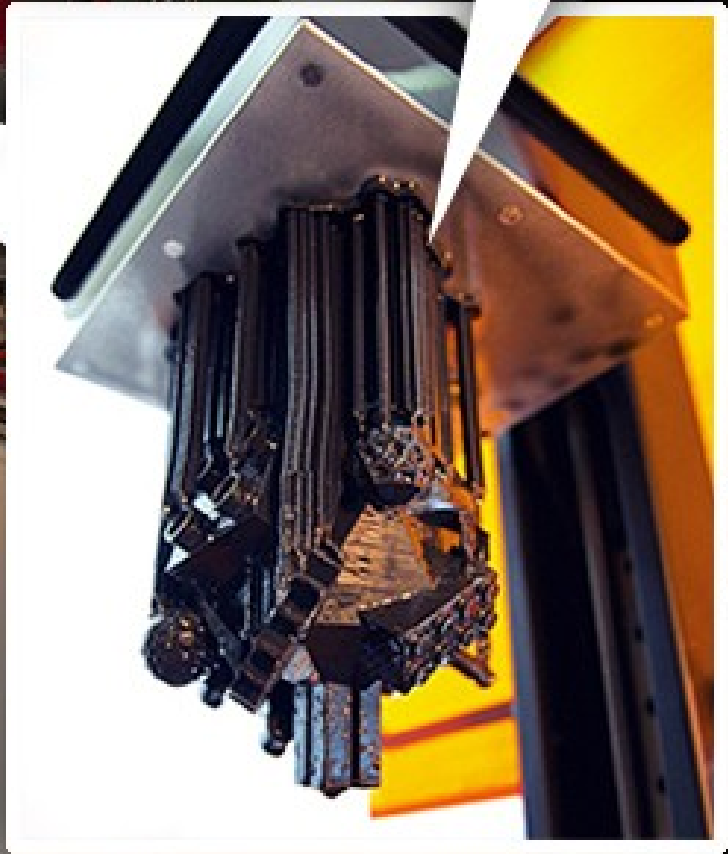
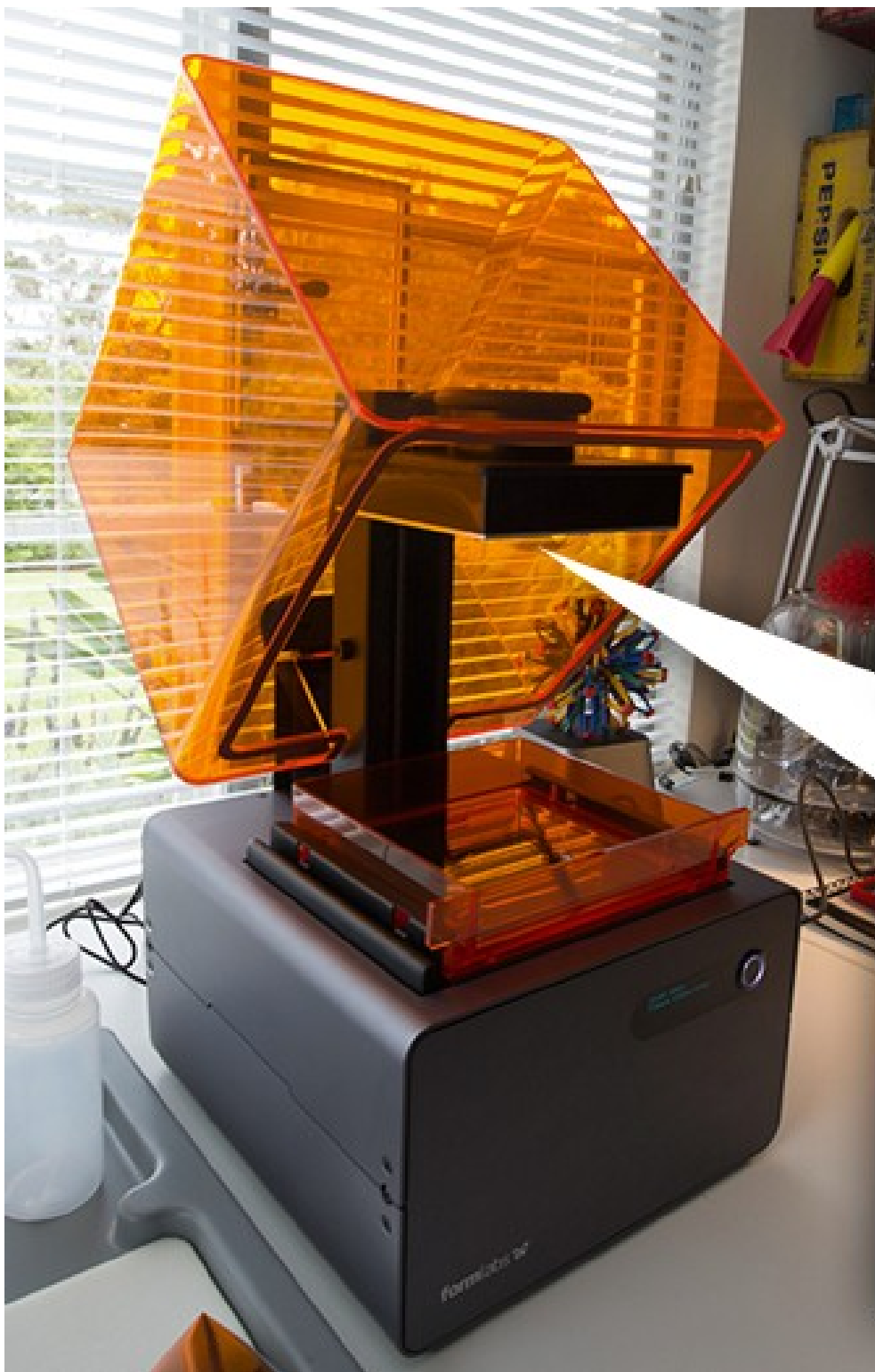
15-294 Rapid Prototyping Technologies:

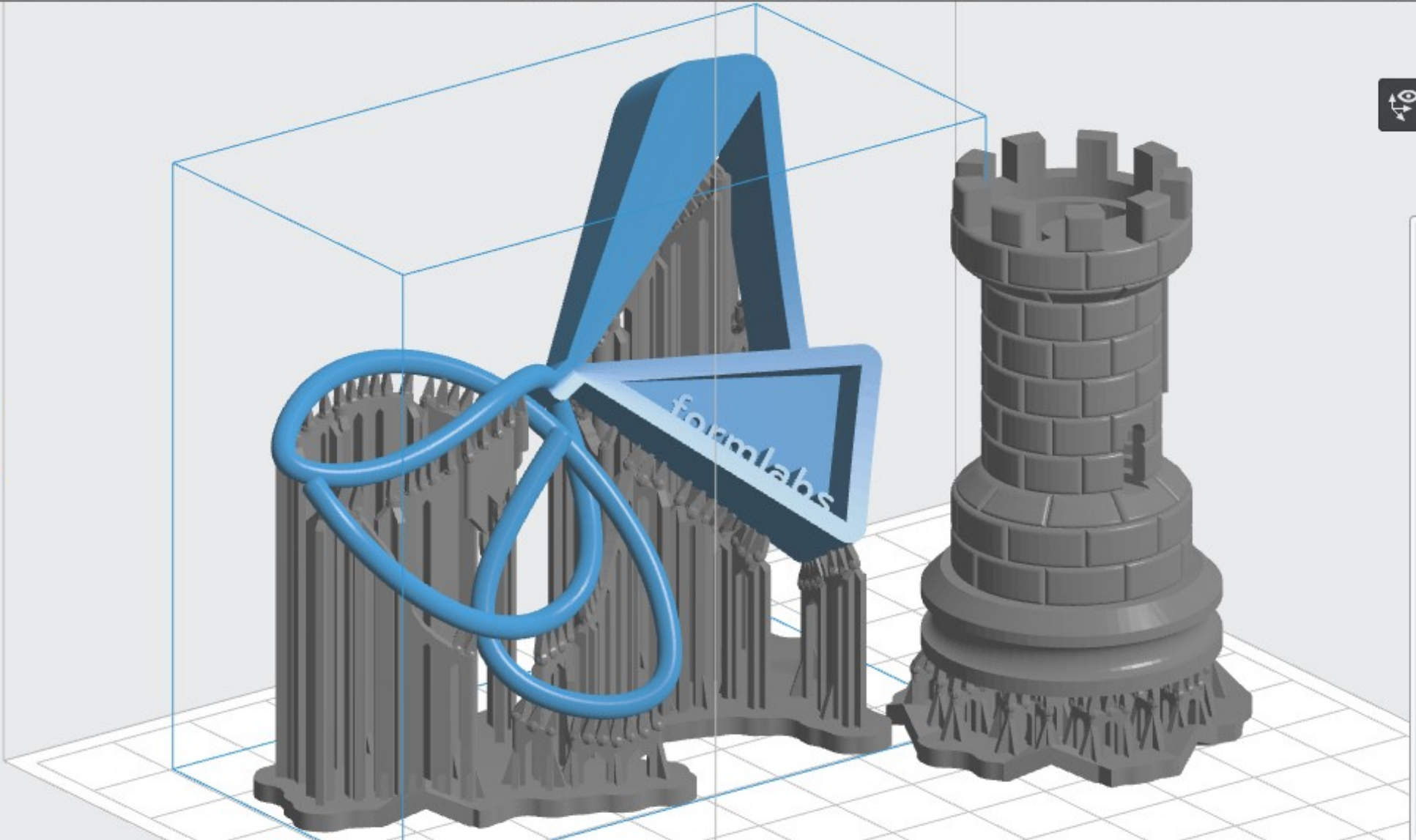
Form 1+ Printer and Preform Software

Dave Touretzky
Computer Science
Carnegie Mellon University









Volume 42.1 mL

Layers 1370

Print Time Calculate

Material Grey (F1+) (0.05 mm)

Printer Form 1+



Checking the Tank



Filling the Tank

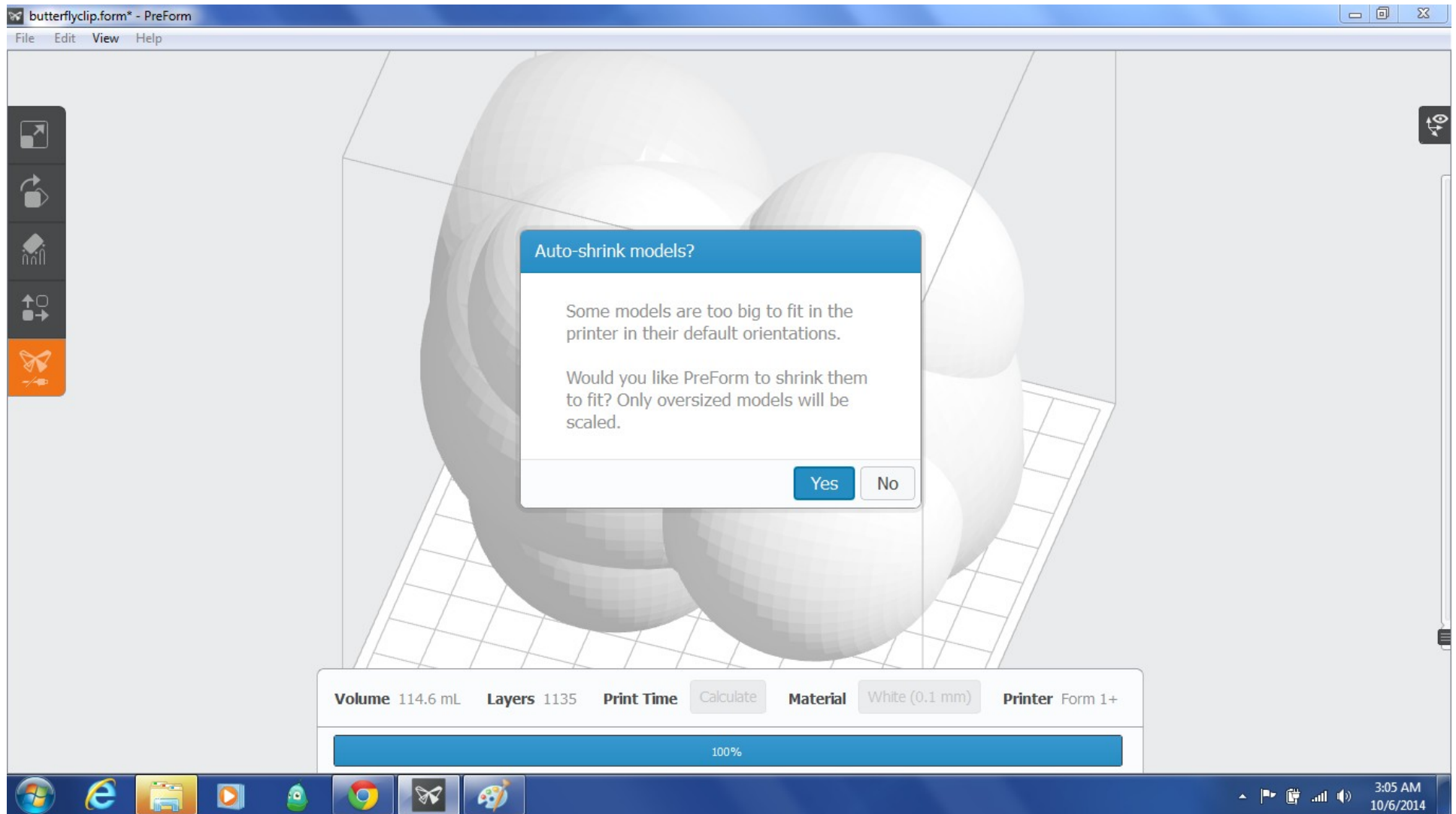
Send to Printer



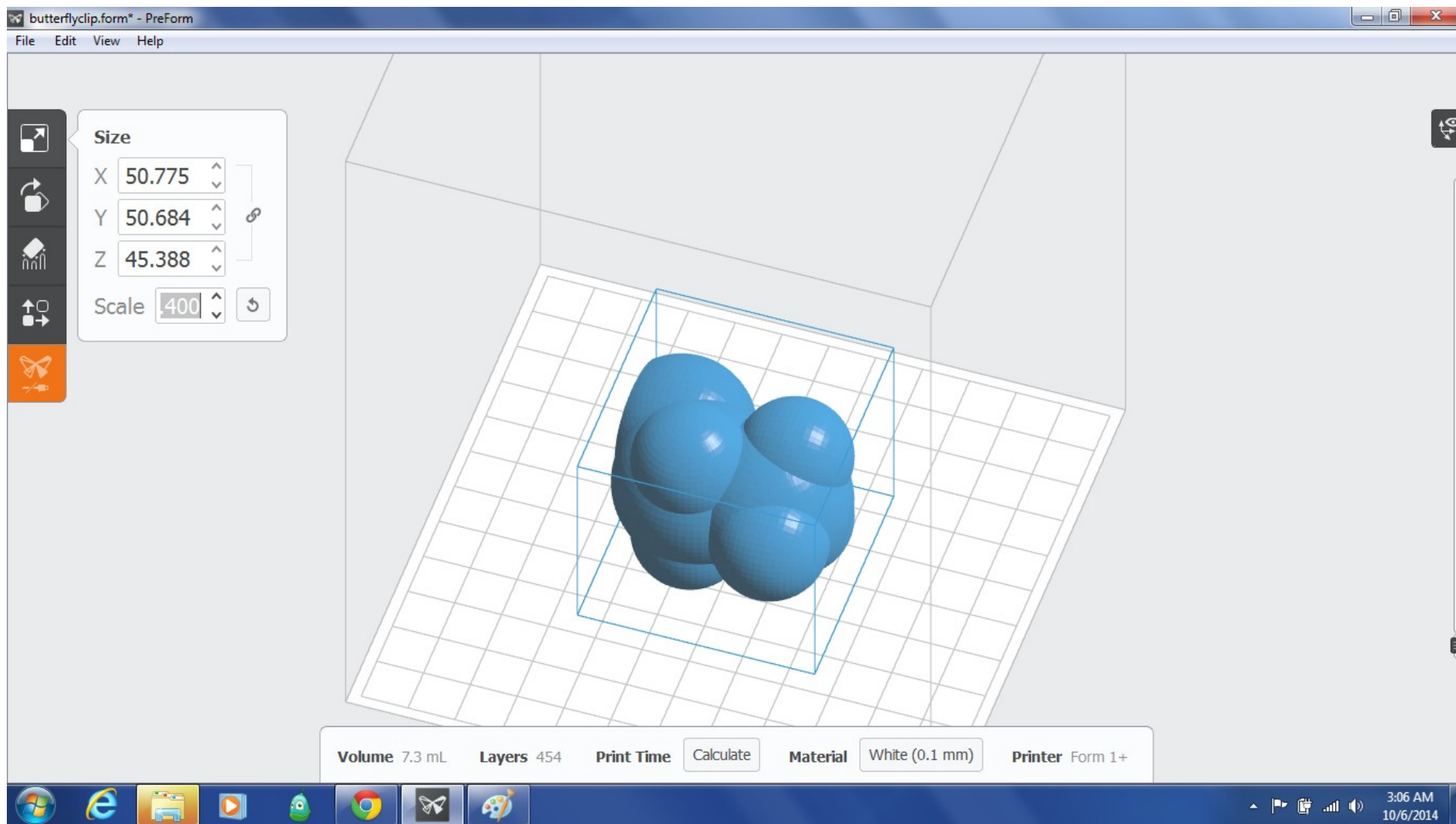
Printing the Molecule and Cap

- Load
- Scale
- Orientation
- Supports
- Layout (on the bed)
- Print Setup
- Print

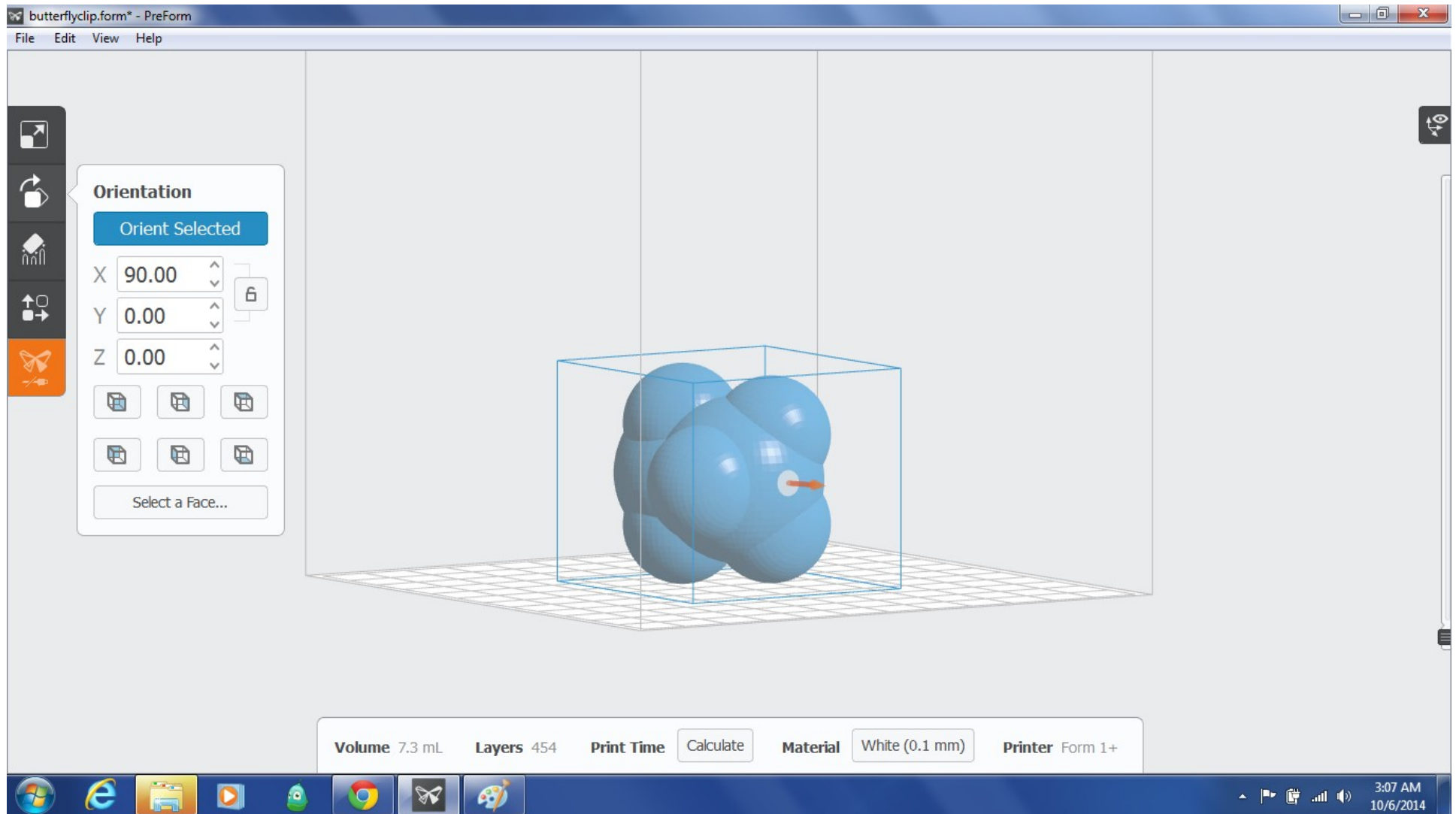
Load STL File



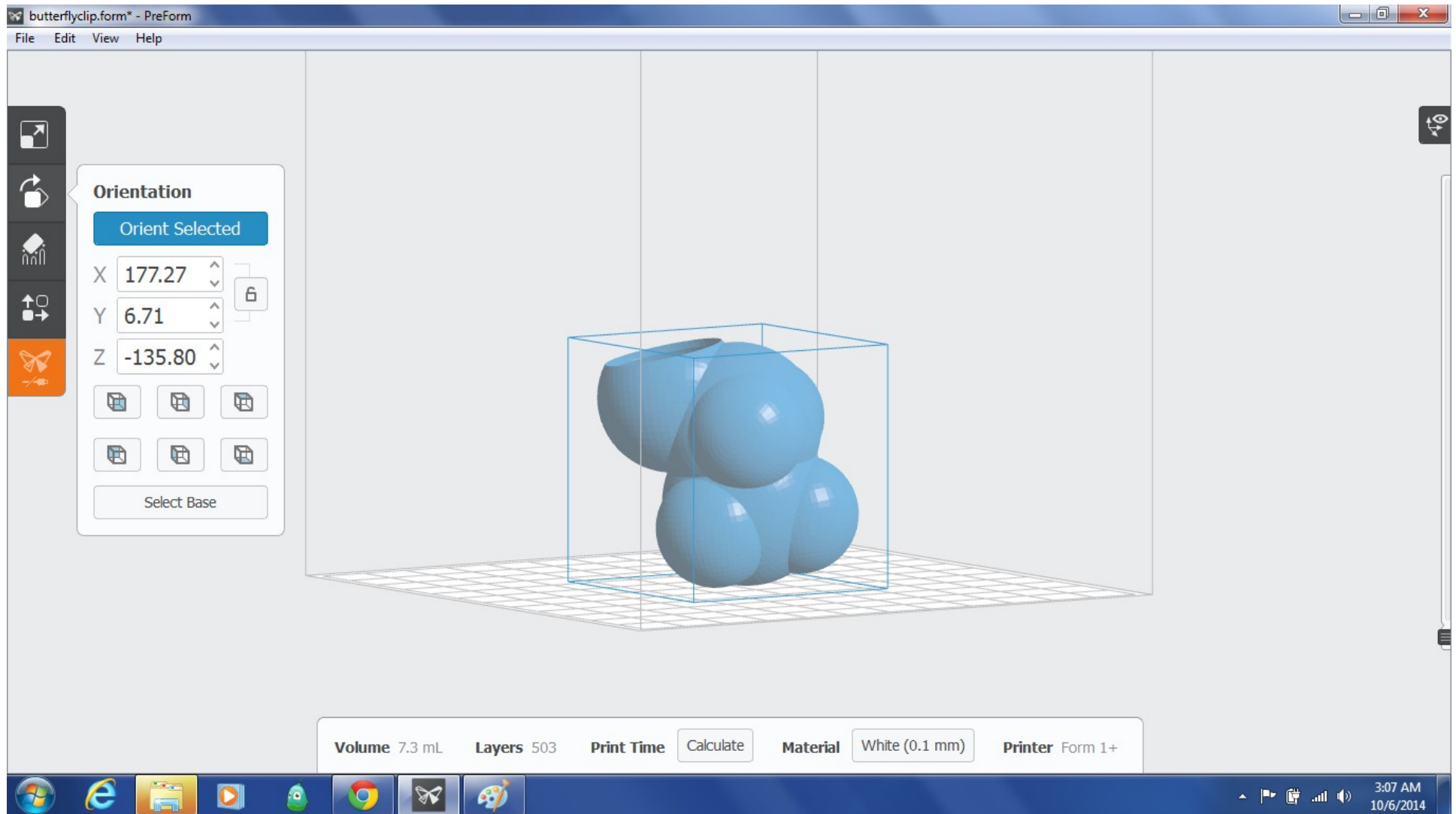
Scale



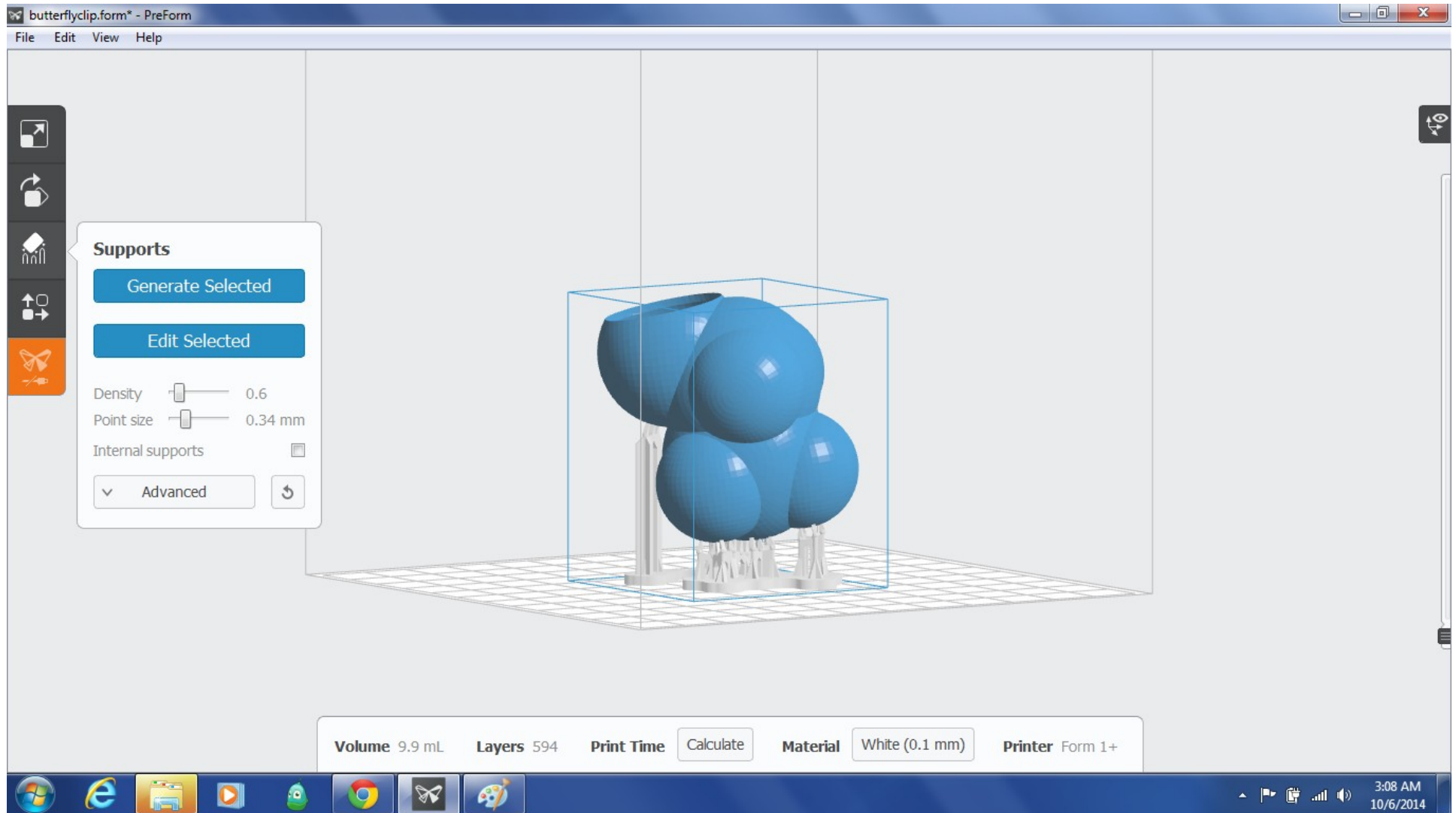
Orientation



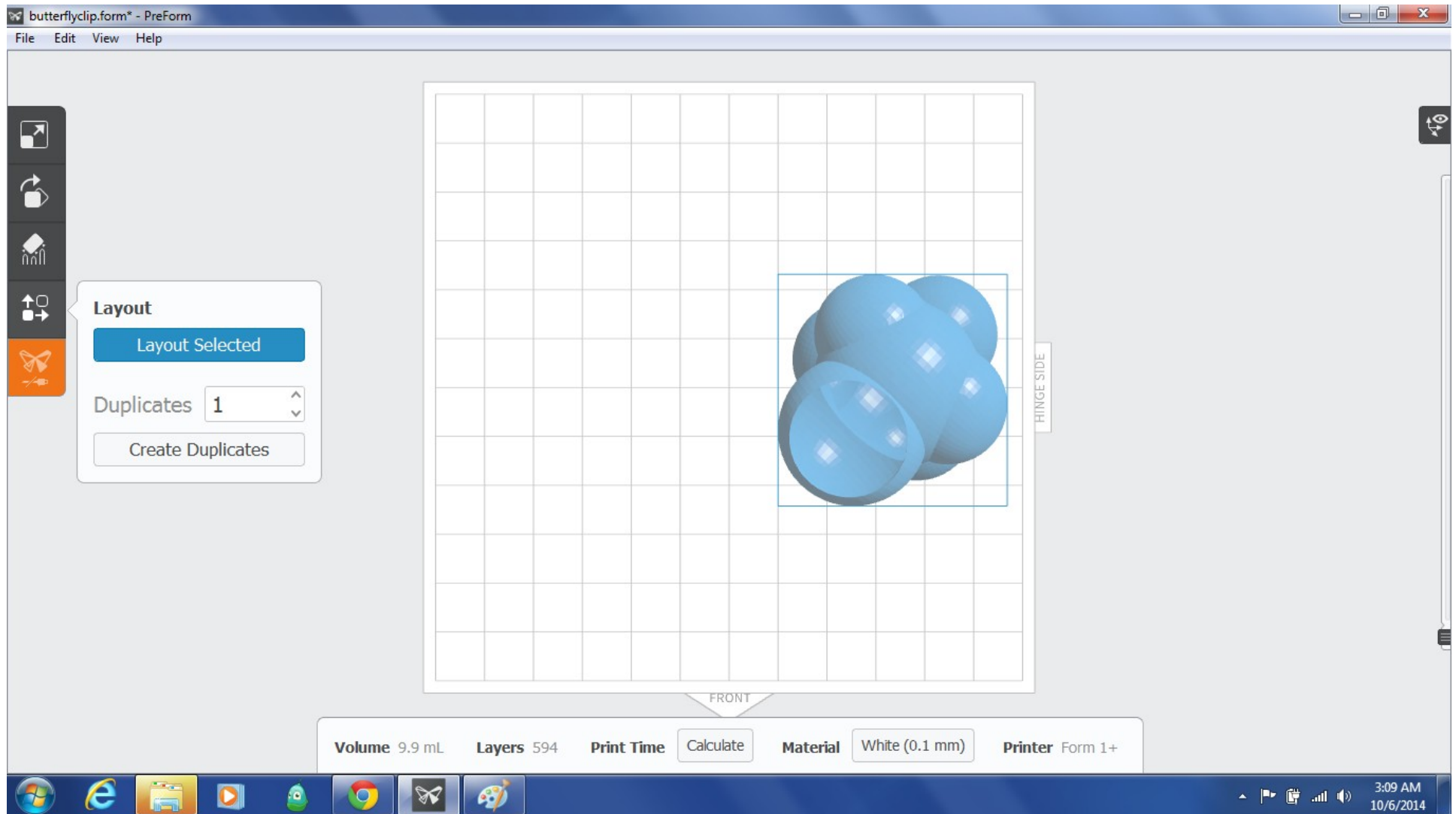
Orientation



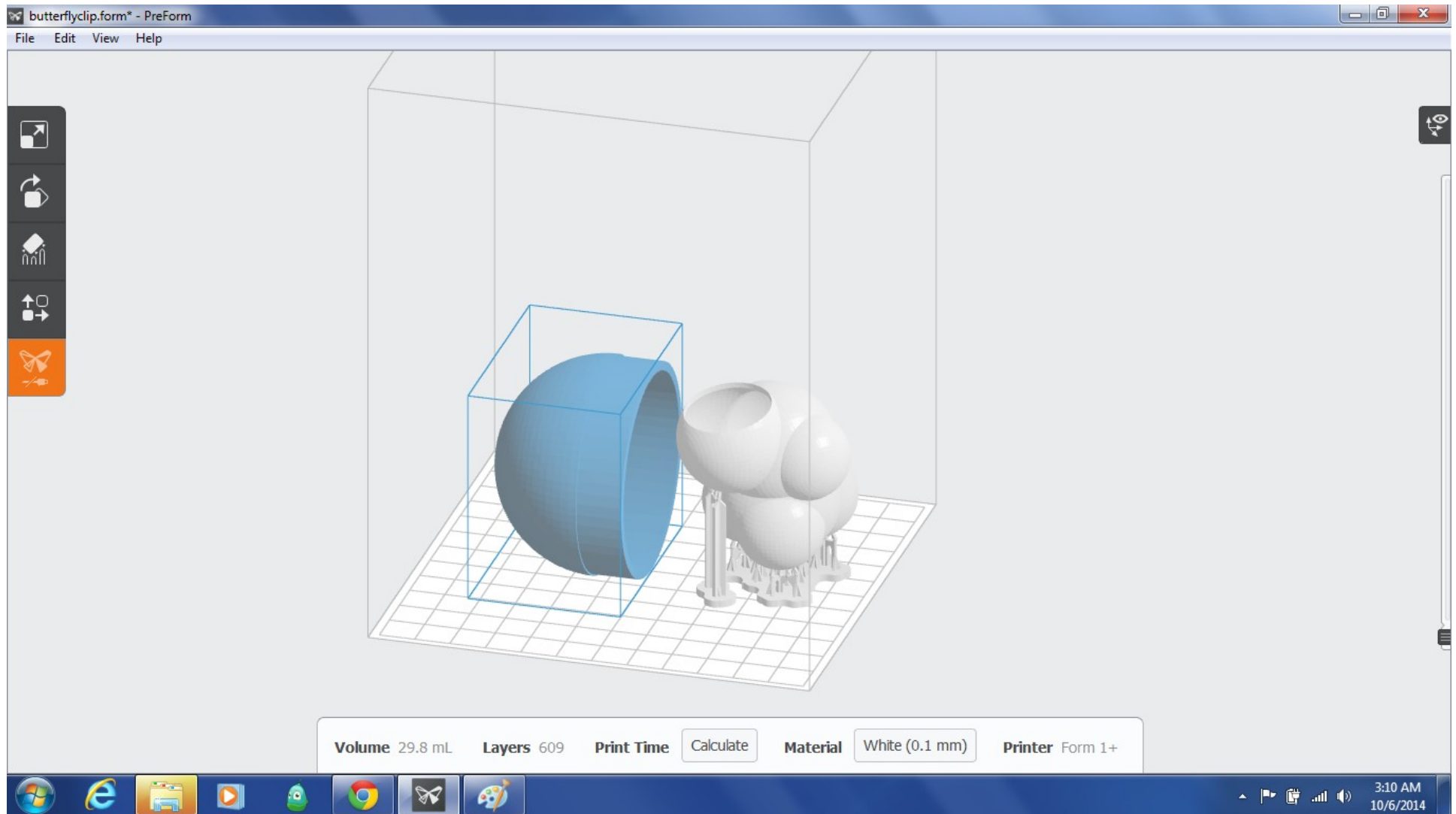
Supports



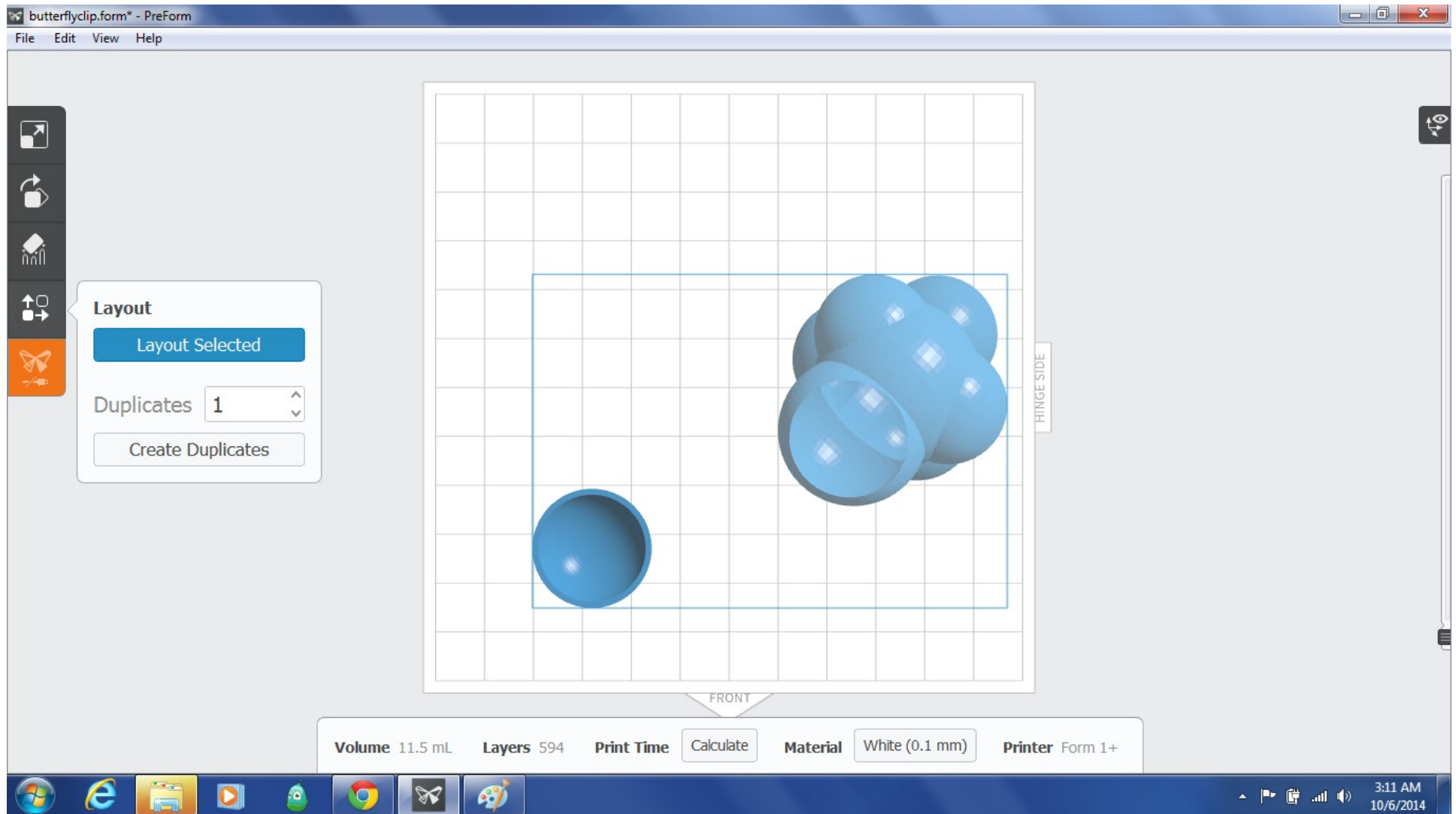
Layout



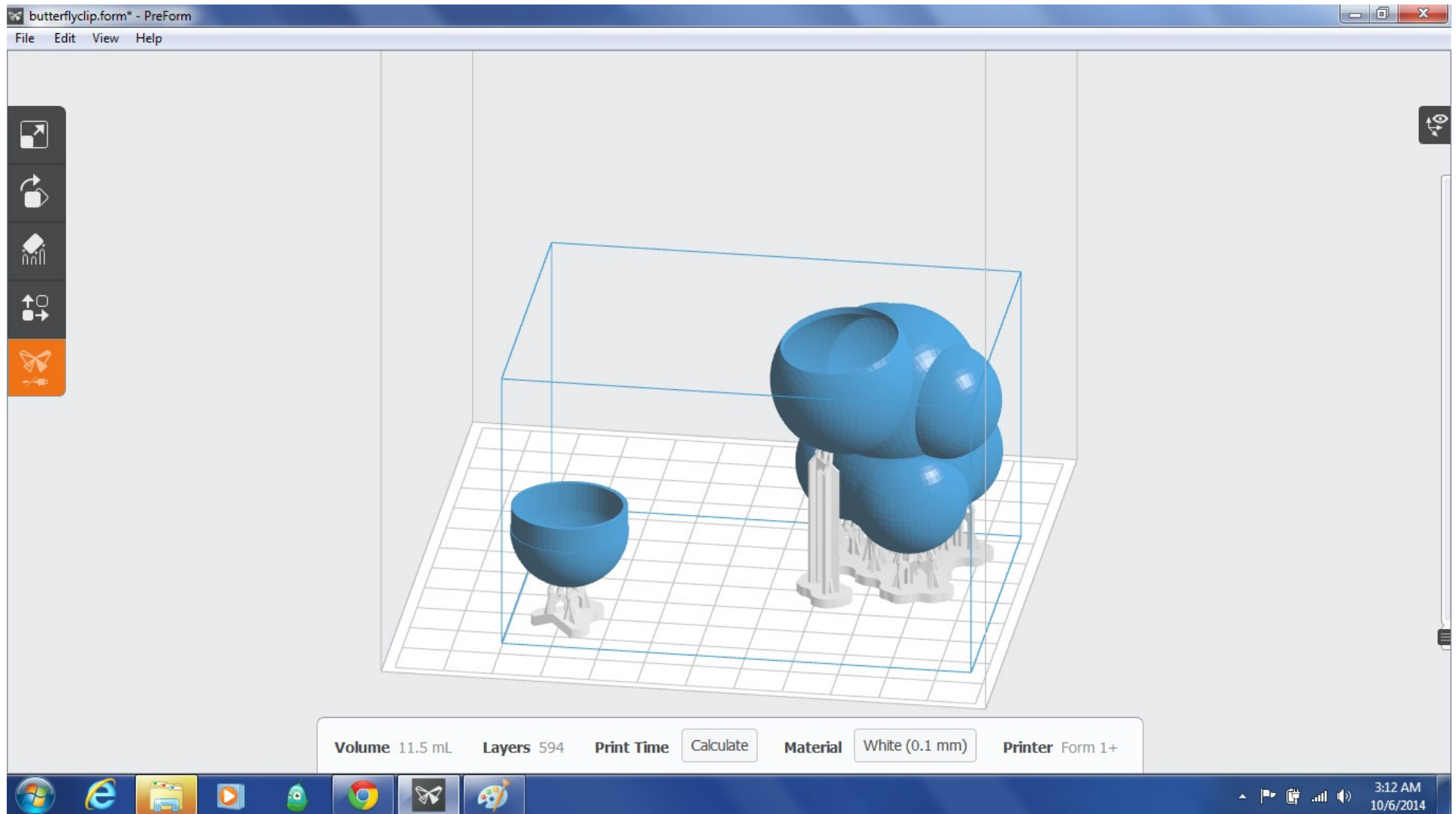
Second Part



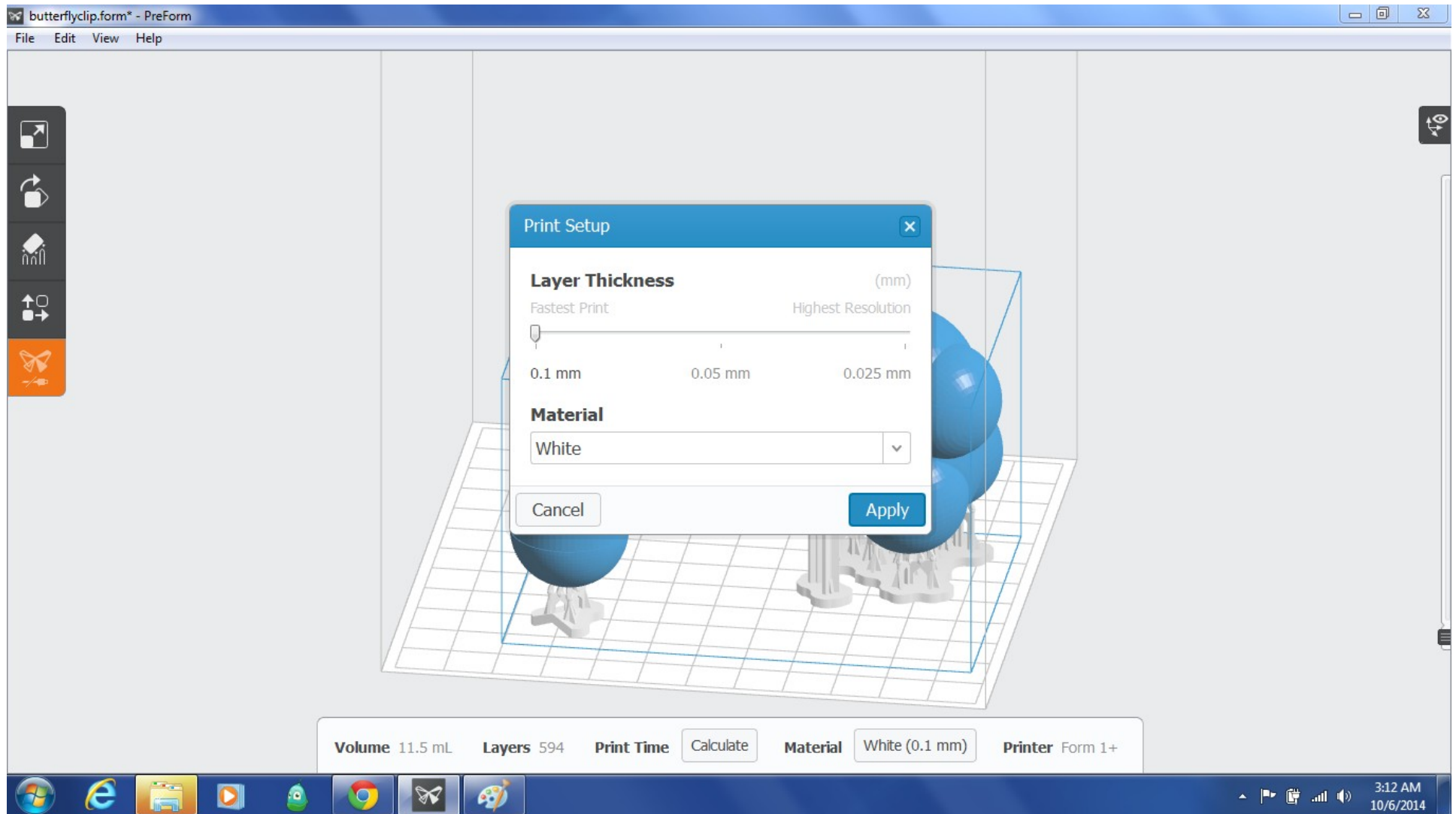
Scaled, Oriented, Laid Out



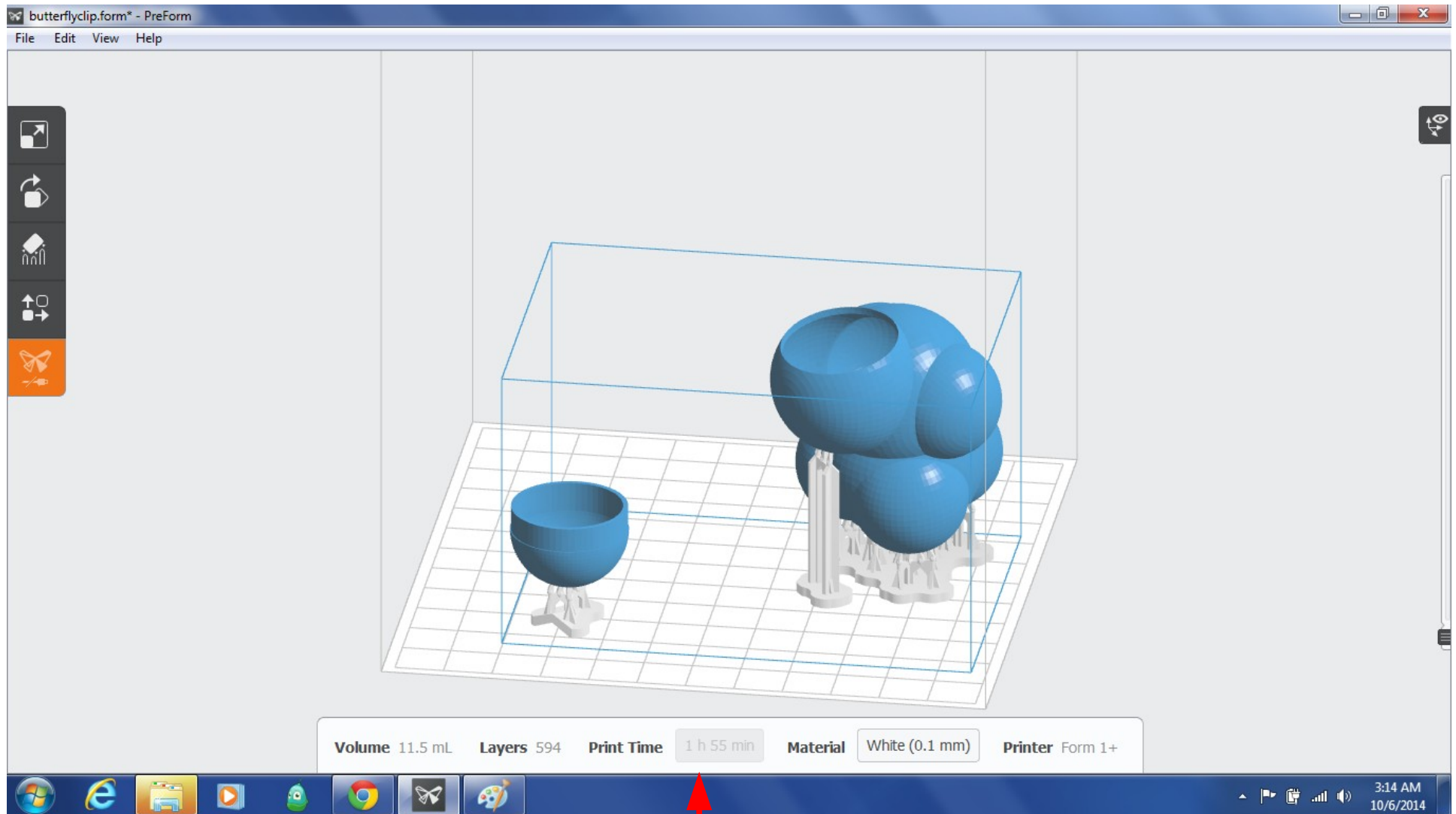
Another View



File > Print Setup



Calculated Print Time



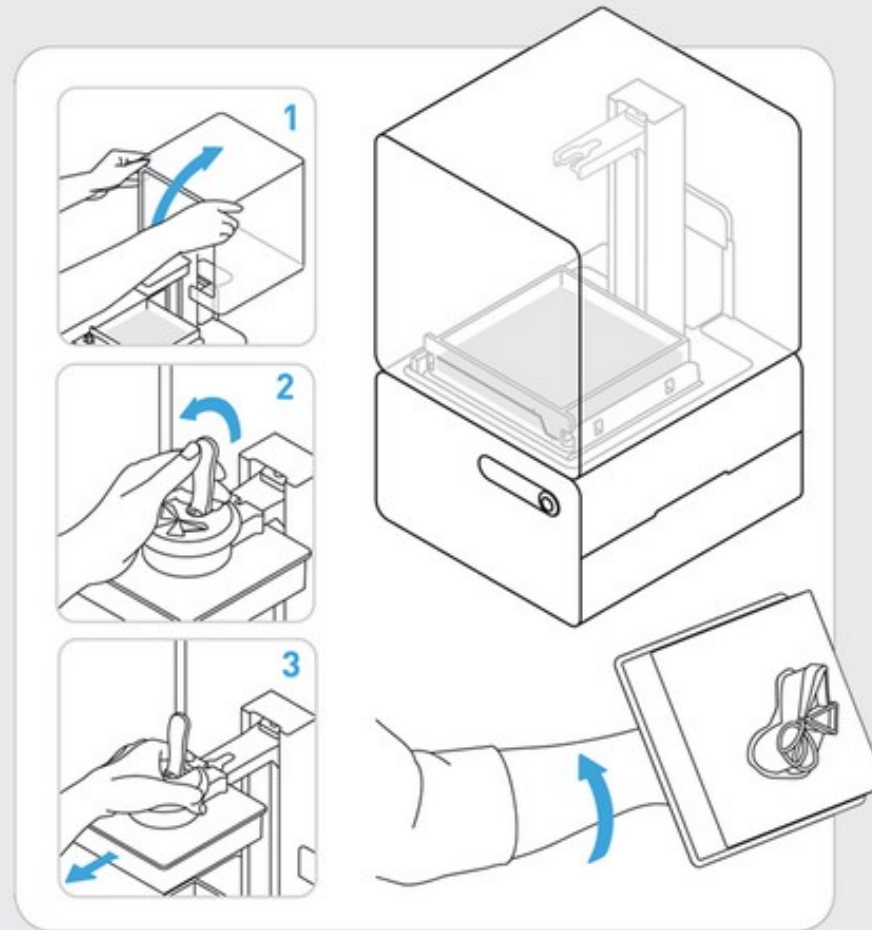
1 h 55 min

Finishing Kit



Finishing 1

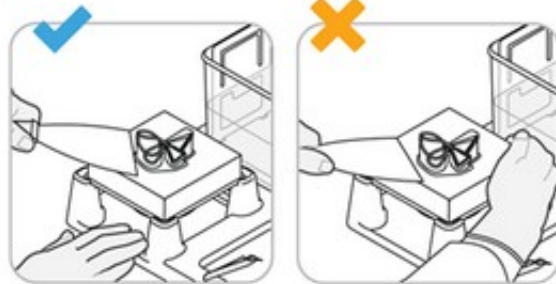
1 / 4



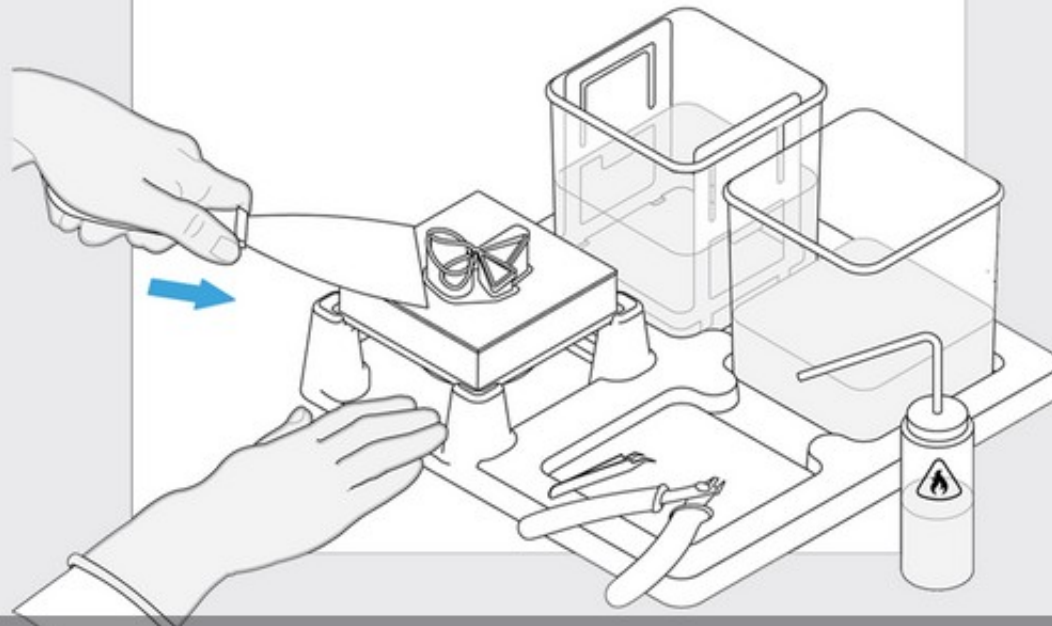
Step 1—Remove Build Platform: A simple lever allows you to remove your model from the Form 1+.

Finishing 2

2 / 4



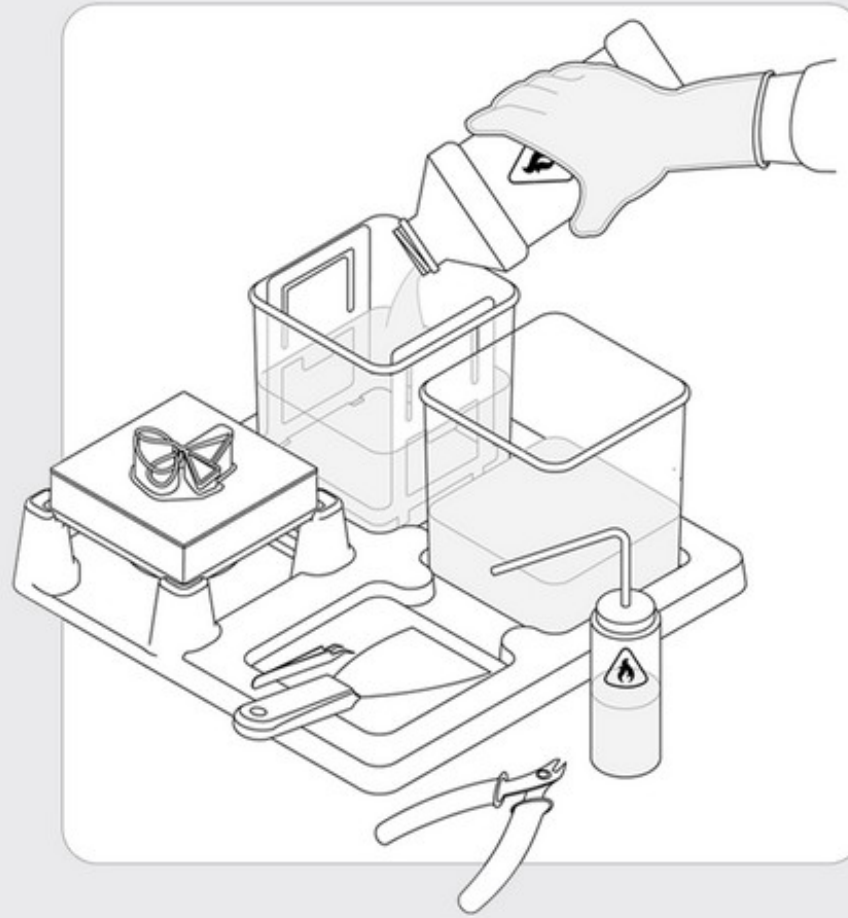
sharp
scraper



Step 2—Peel Off Part: The scraper from the Form Finish Kit helps you easily peel your part off the build platform.

Finish 3

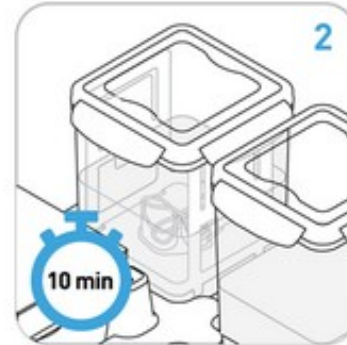
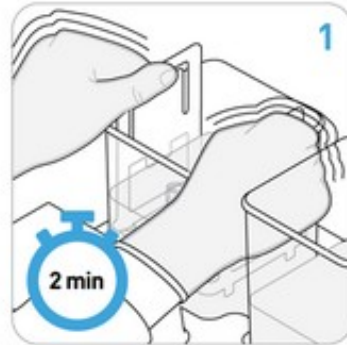
3 / 4



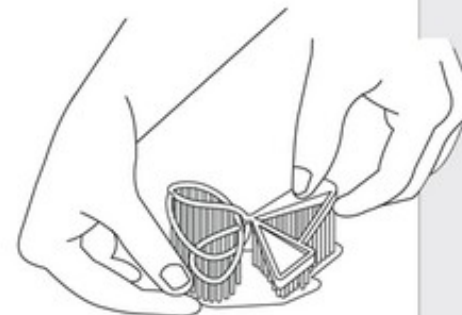
Step 3—Rinse Your Print: Your model is ready-to-go once printed, but needs to be rinsed clean in an alcohol bath.

Finish 4

4 / 4



optional second rinse



Step 4—Remove Supports: After removing your print's supports, you have a smooth model that is ready for finishing.

Robert Vignone Sculptures Made on the Form 1

