

Lecture 10

Segmentation, Part II (ch 8)

Active Contours (Snakes)

ch. 8 of *Machine Vision* by Wesley E. Snyder & Hairong Qi

Spring 2024

16-725 (CMU RI) : BioE 2630 (Pitt)

Dr. John Galeotti



The content of these slides by John Galeotti, © 2012 - 2024 Carnegie Mellon University (CMU), was made possible in part by NIH NLM contract# HHSN276201000580P, and is licensed under a Creative Commons Attribution-NonCommercial 3.0 Unported License. To view a copy of this license, visit <http://creativecommons.org/licenses/by-nc/3.0/> or send a letter to Creative Commons, 171 2nd Street, Suite 300, San Francisco, California, 94105, USA. Permissions beyond the scope of this license may be available either from CMU or by emailing itk@galeotti.net.
The most recent version of these slides may be accessed online via <http://itk.galeotti.net/>

Review: Segmentation

- A partitioning...
 - Into connected regions...
- Where each region is:
 - Homogeneous
 - Identified by a unique label



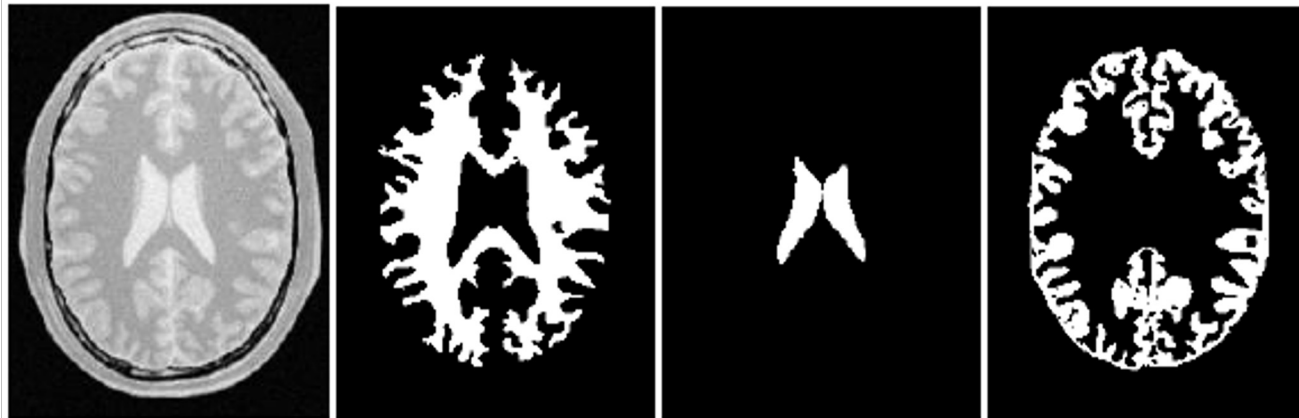
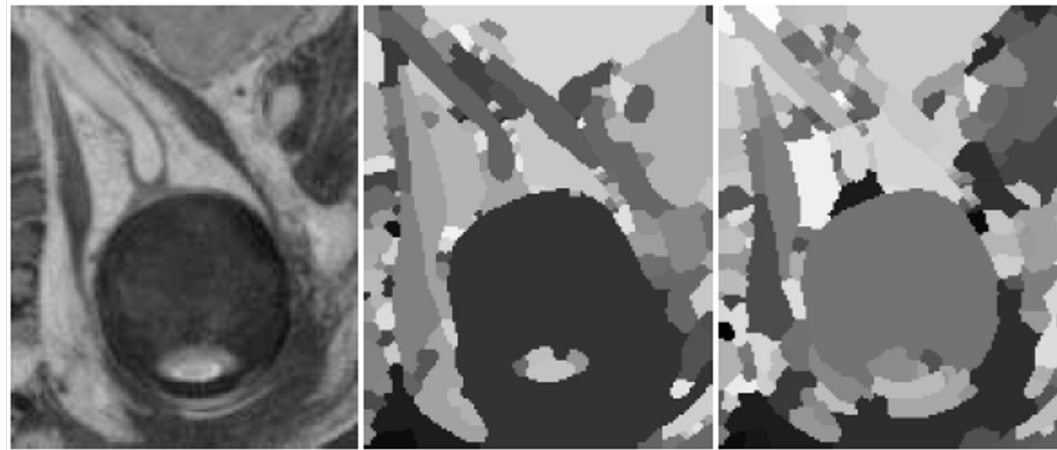
There is room for interpretation here...



And here

Review:

The “big picture:” Examples from *The ITK Software Guide*



Figures 9.12 (top) & 9.1 (bottom) from the ITK Software Guide v 2.4, by Luis Ibáñez, et al.

Review:

The Nature of Curves

- A curve is a 1D function, which is simply bent in (“lives in”) ND space.
- That is, a curve can be parameterized using a single parameter (hence, 1D).
- The parameter is usually arc length, s
 - Even though not invariant to affine transforms.

Review:

The Nature of Curves

- The *speed* of a curve at a point s is:

$$\dot{\Psi}(s) = \sqrt{\left(\frac{\partial x}{\partial s}\right)^2 + \left(\frac{\partial y}{\partial s}\right)^2}$$

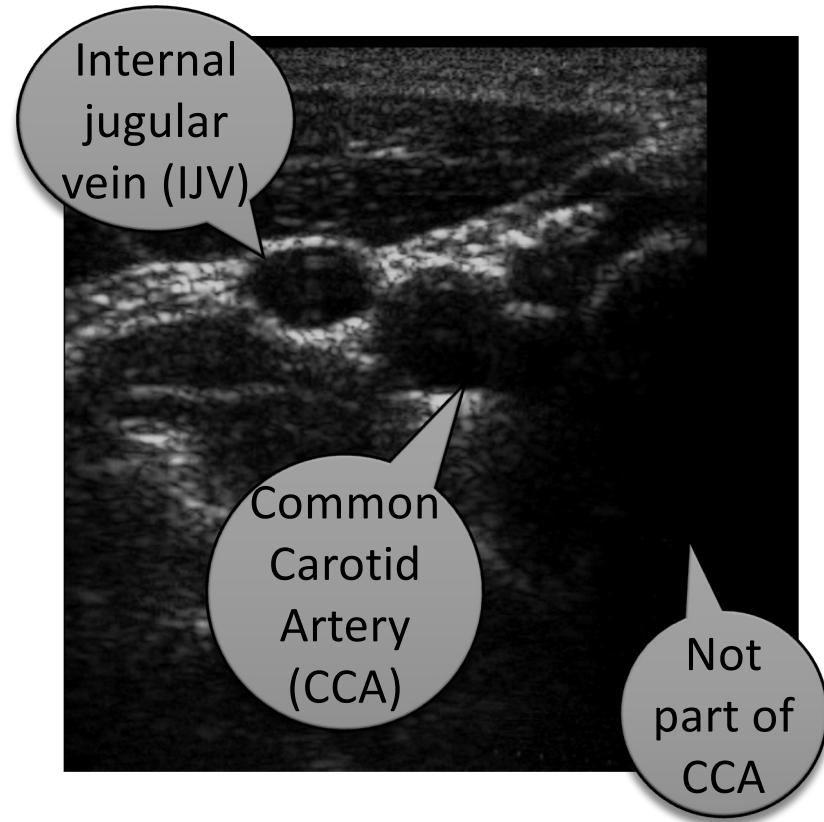
- Denote the **outward normal direction** at point s as $\mathbf{n}_{\Psi}(s)$
- Suppose the curve is closed:
 - The concepts of INSIDE and OUTSIDE make sense
 - Given a point $\mathbf{x} = [x_i, y_i]$ not on the curve,
 - Let Ψ_x represent the closest point on the curve to \mathbf{x}
 - The arc length at Ψ_x is defined to be s_x .
 - \mathbf{x} is INSIDE the curve if:
$$[\mathbf{x} - \Psi_x] \cdot \mathbf{n}_{\Psi}(s_x) \leq 0$$
 - And OUTSIDE otherwise.

Active Contours (Snakes)

- Most whole-image segmentation methods:
 - Connectivity and homogeneity are based only on *image* data.
- In medical imaging, we often want to segment an anatomic object
 - Connectivity and homogeneity are defined in terms of anatomy, not pixels
 - How can we do this from an image?
 - We definitely have to make use of prior knowledge of anatomy!
 - Radiologists do this all the time

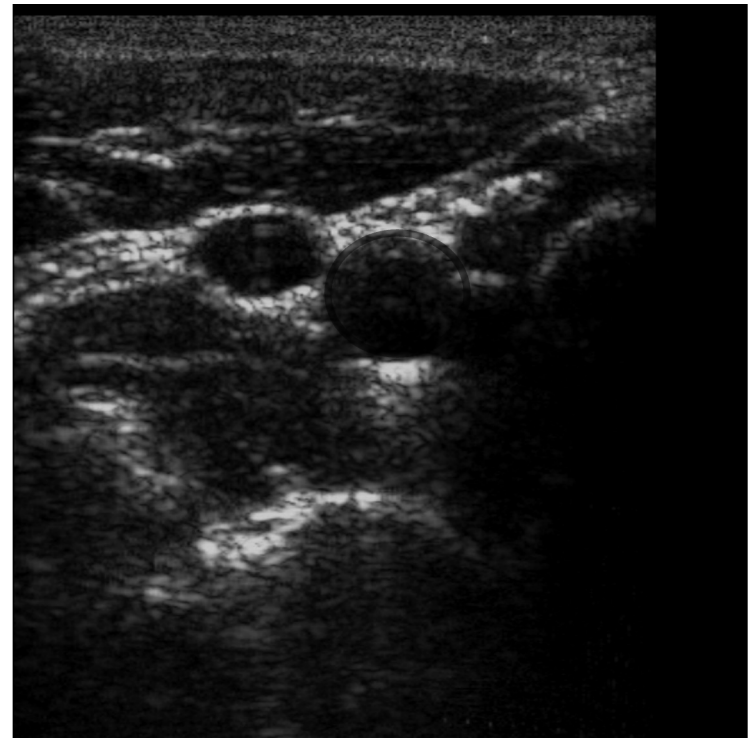
Active Contours (Snakes)

- Let's look at ultrasound of my neck.
- Examine the CCA:
 - Large parts of the boundary are NOT visible!
 - We know the CCA doesn't include the large black area at the bottom-right
- How can we automatically get a "good" segmentation?
- This is (usually) hard.



Active Contours (Snakes)

- How do we know where the edges/ boundaries are?
- Why are they missing in some places?
 - Ultrasound & OCT frequently measure pixels as too dark
 - Nuclear medicine often measures pixels as too bright
 - X-Ray superimposes different objects from different depths
- What can we do about it?
 - Edge closing won't work.
 - "Hallucinate"



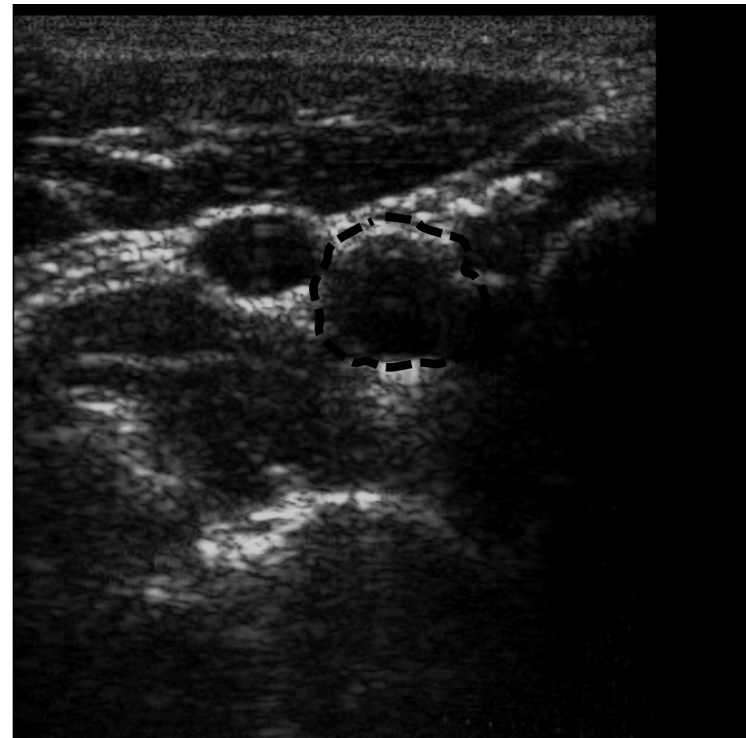
Active Contours (Snakes)

- Another example & underlying idea:

Active Contours (Snakes)

- Active contours can insure* that:
 - The segmentation is not “drastically” too large or too small
 - It is approximately the right shape
 - There is a single, closed boundary
- Active contours can still be very wrong
 - Just like every other segmentation method

* Requires careful usage.



Active Contours (Snakes)

- Step 1:
 - Initialize the boundary curve (the active contour)
 - Automatically,
 - Manually, or
 - Semi-automatically
- Step 2:
 - The contour moves
 - “Active” contour
 - Looks like a wiggling “snake”
- Step 3:
 - The contour stops moving
 - When many/most points on the contour line up with edge pixels



Initialization

- Good initialization is critical!
 - Especially around small neighboring objects
 - Especially if the image is really noisy/blurry
- Some snake algorithms require initialization entirely inside or outside of the object.
 - It is usually best to initialize on the “cleaner” side of the boundary.
- Clinically, this is often involves a human, who:
 - Marks 1 or more points inside the object
 - Marks 1 or more boundary points
 - and/or—
 - Possibly draws a simple curve, such as an ellipse

Moving the Contour

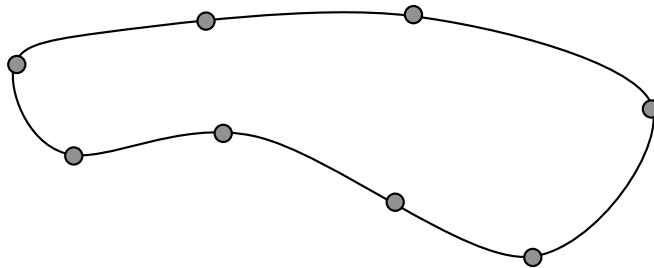
- Two common philosophies:
- Energy minimization
 - “Ad-hoc” energy equation describes how good the curve looks, and how well it matches the image
 - Numerically optimize the curve
- Partial differential equations (PDEs)
 - Start the curve expanding or contracting
 - Points on the curve move more slowly as:
 - They become more curved
 - They lie on top of image “edginess”
 - The curve ideally stops moving when it lies over the appropriate image boundaries

Active Contours: Energy Minimization

- “Visible” image boundaries represent a low energy state for the active contour
 - ...If your equations are properly set up
 - This is usually a *local* minima
 - This is one reason why initialization is so important!
- The curve is (typically) represented as a set of *sequentially connected points*.
- Each point is connected to its 2 neighboring points.
- The curve is usually closed, so the “first” and “last” points are connected.

Active Contours: Energy Minimization

- Active contour points \neq pixels
 - At any given time, each point is located at some pixel location
 - (Think `itk::Index` or `itk::ContinuousIndex`)
 - But points move around as the curve moves
 - And neighboring points are usually separated by several pixels
 - This allows room for each point to “move around”



Active Contours: Snake Energy

- Two Terms
 - Internal Energy + External Energy
- External Energy
 - Also called *image energy*
 - Designed to capture desired image features
- Internal Energy
 - Also called *shape energy*
 - Designed to reduce extreme curvature and prevent outlier points

Active Contours: External (Image) Energy

- Designed to capture desired image features
- Example:
 - $E_E = \sum \exp(- || \nabla f(\mathbf{X}_i) ||)$
 - Measures the gradient magnitude in the image at the location of each snake point

Active Contours: Internal (Shape) Energy

- Designed to reduce extreme curvature and prevent outlier points

- Example:

Can add a -d term for avg. segment length

Looks like a 2nd derivative kernel

$$E_I = \sum \alpha ||X_i - X_j|| + \beta ||X_{i-1} - 2X_i + X_{i+1}||$$

“Rubber band tension”

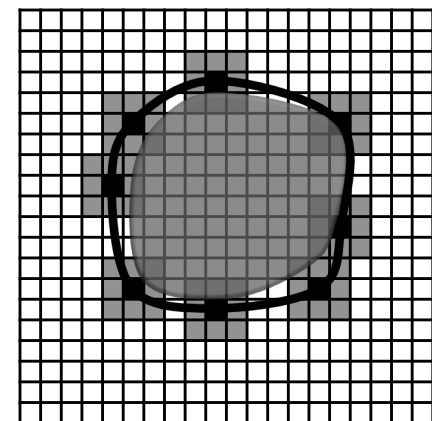
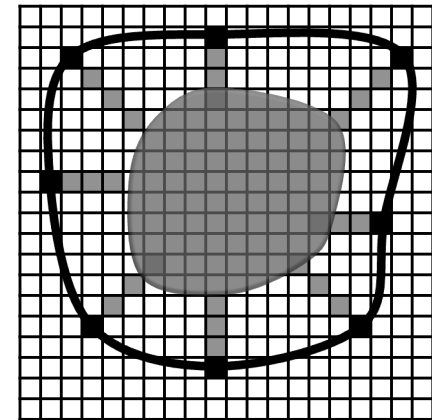
β is usually larger than α

- Minimizes:

- How far apart the snake points are from one another
- How much the curve bends

Active Contours: Selecting New Points

- Need choices to evaluate when minimizing snake energy
- Scenario 1: Snake can only shrink
 - Useful to execute between (large) initialization and normal execution
 - Look at points only inside the contour, relative to current point locations
- Scenario 2: Each snake point can move 1 step in any direction
 - Useful if the snake is close to the correct boundary
 - Look at all vertex-connected neighbors of each point's current location
- Other scenarios possible



Active Contours: Energy Minimization

- Numerical minimization methods
- Several choices
 - In 2D, dynamic programming can work well
 - In 3D (i.e. “active surfaces”), simulated annealing can be a good choice
- Both methods require a finite (typically sampled) number of possible states.
 - The solution obtained is hopefully the best within the set that was sampled, but...
 - If the best solution in the region of interest is not included in the sample set, then we won't find it!

Active Contours: Partial Differential Equations (PDEs)

- A different method for moving the active contour's points
- Used by “Level Sets”
- Operates on discrete “time steps”
- Snake points move normal to the curve (at each “time step”).
- Snake points move a distance determined by their *speed*.

Active Contours using PDEs: Typical Speed Function

- Speed is usually a product of internal and external terms:
 - $s(x,y) = s_I(x,y)s_E(x,y)$
- Internal (shape) speed:
 - $s_I(x,y) = 1 - || \epsilon \kappa(x,y) ||$
 - where $\kappa(x,y)$ measures the snake's curvature at (x,y)
- External (image) speed:
 - $s_E(x,y) = (1 + \Delta(x,y))^{-1}$
 - where $\Delta(x,y)$ measures the image's edginess at (x,y)

Active Contours using PDEs: Typical Problems

- Curvature measurements are very sensitive to noise
 - They use 2nd derivatives
- These contour representations don't allow an object to split
 - This can be a problem when tracking an object through multiple slices or multiple time frames.
 - A common problem with branching vasculature or dividing cells
- How do you keep a curve from crossing itself?
 - One solution: only allow the curve to grow

Level Sets

- A variation of the PDE framework
- Address the problems on the previous slide
- We will go over these in detail in the next lecture