



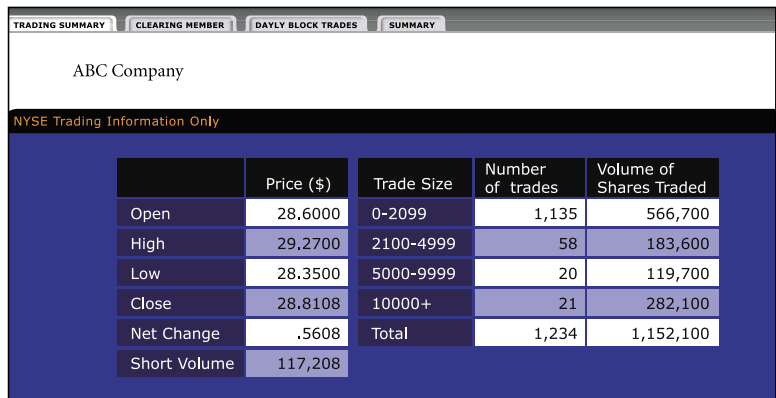
NYSEnet[®]

A Strategic Resource
for Market Intelligence

Market Info

Proprietary Trading Information

By using NYSEnet's unique capabilities, you can analyze your company's trading characteristics and evaluate market quality on a daily basis.



The screenshot shows a trading summary for 'ABC Company' on NYSEnet. It includes a table with columns for Price (\$), Trade Size, Number of trades, and Volume of Shares Traded. The data is as follows:

	Price (\$)	Trade Size	Number of trades	Volume of Shares Traded
Open	28,6000	0-2099	1,135	566,700
High	29,2700	2100-4999	58	183,600
Low	28,3500	5000-9999	20	119,700
Close	28,8108	10000+	21	282,100
Net Change	.5608	Total	1,234	1,152,100
Short Volume	117,208			

Market Quality

Unmatched market quality is a key benefit of the NYSE auction market. Subscribers to NYSEnet can monitor market quality as measured by continuity, depth and spread. Use the versatile calendar feature to compare and analyze your company's market quality over various time periods.

Trading History

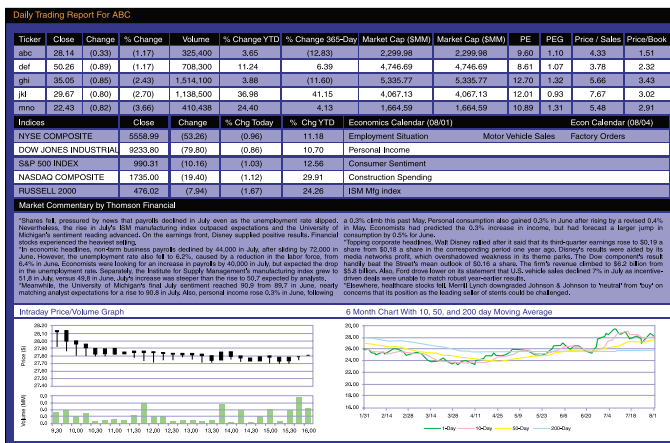
NYSEnet profiles the characteristics of your company's order flow. On a daily, weekly, monthly and quarterly basis, NYSEnet segments volume by trade size, and offers short volume and block activity. Consistent monitoring of these trends can help in crafting a targeted message to a diverse shareholder base.

Bulletin Board

The latest NYSE news, upcoming events and webcasts are posted to the NYSEnet bulletin board. The Bulletin Board includes other important references, such as the Listed Company Manual, client service contacts, a library of past *New & Noteworthy* issues, and direct links to many professional associations.

NYSE Market FocusSM

Integrated into a single solution, NYSE Market Focus provides valuable insight about the performance of your stock and the capital markets. This comprehensive report includes qualitative and quantitative analysis that is updated daily to reflect the most current trading activity.



Competitive Analysis

Customize NYSE Market Focus and compare your stock to a select group of peers on widely used valuation metrics including market value, price/earnings, price/sales, price/book and PEG. Track daily closing price and volume and price changes year-to-date and over a 365-day period.

Technical Trading Charts

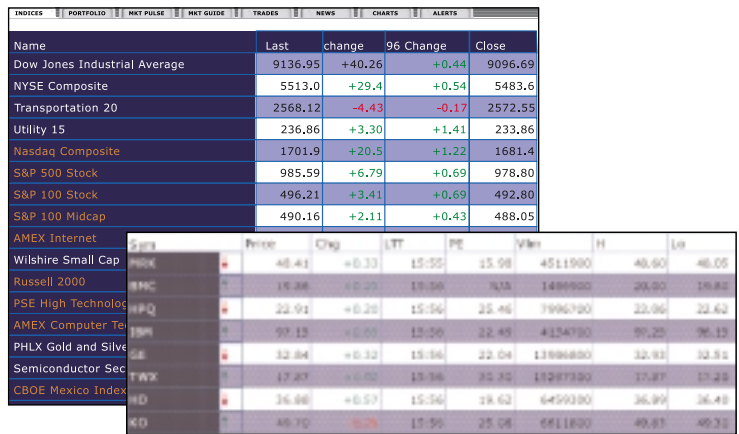
Evaluate trading patterns in easy-to-read intra-day price/volume charts and identify potential shifts in trading activity based on moving averages.

Gain Market Insight

Access qualitative commentary describing macro events that are driving the market's performance. Monitor daily and year-to-date major market indices performance and a calendar of newsworthy economic events.

Market Data

The depth and quality of information provided in the Market Data section allows NYSEnet users to evaluate and react quickly to market events.



Customize Your Own Portfolio

Using real-time information* review your stock's performance versus its peers. Create customized portfolios and monitor trading activity and metrics, like P/E, dividends and earnings, for up to 100 companies.

Receive Market Moving Alerts

Set alerts for important targets including last sale, bid, ask and volume. Define thresholds for any and all stocks in your portfolio.

Use Charting Capabilities

Chart your company's stock performance vis-à-vis peers and various market indices.

Access Corporate Profiles

Reference in-depth access to a company's vital data including business description, income statement, balance sheet, and comparisons of valuation to industry peers and the S&P 500.

*Real-time quotes for NYSE companies. Nasdaq and American Stock Exchange companies are reported on a 15-minute delay.

NYSE Institutional Insight®

Track your evolving shareholder base with NYSE Institutional Insight – the market’s most comprehensive online source for shareholder data.

Rank	Institution	Position	% O/S	% Change	Style
1	Capital Research & management Company	320,756,501	7.44	5.16	Core value
2	Fidelity Management & Research	272,564,517	6.32	25.90	GARP
3	Barclays Global Investors, N.A.	155,349,328	3.60	9.41	Index
4	Janus Capital Management LLC	141,433,591	3.28	-15.28	Aggres. Gr.
5	State street Global Advisors (US)	121,248,397		7.71	Index
6	Wellington Management Company, LLP	111,897,266	2.59	3.22	Core Value
7	Smith Barney Asset Management	82,800,276	1.92	3.45	GARP
8	Vanguard Group, Inc.	78,400,664	1.82	2.27	Index
9	Harris Associates L.P.	44,654,782	1.04	12.30	Core Value
10	College Retirement Equities Fund	41,310,074	0.96	29.98	Index
Subtotal		1,370,415,396	31.78		
Total		2,959,676,251	68.63		
Number of Holders		1,703			

Identify Institutions That Own Your Stock

Using 13(f) filings, NYSE Institutional Insight identifies institutional investors in your stock, by providing links to portfolio managers and their contact information, it facilitates direct communication.

Target Prospective Institutional Investors

Initiate, manage and expand your targeting practices. By identifying investors that own the stock of your peers, you can proactively shape the mix of institutional shareholders to those that are most compatible with your long-term objectives.

Access Institutional Profiles

NYSE Institutional Insight provides summary reports for over 6,000 fund managers. The reports include each fund’s investment philosophy, top 10 holdings, and top five purchases and sales, as well as industry weightings and portfolio characteristics.

NYSEInform®

Enhance your company’s visibility among investors and strategically manage your investor relations events with NYSEInform.

Deliver Timely Event Details to Investors

Publicize your company’s events directly to over 15,000 institutional investors through CCBN’s StreetEventsSM calendar and the widest retail investor network. Control the accuracy of event information and avoid scheduling conflicts during hectic earnings seasons.

Gain Industry Insights

Monitor industry events through a fully customized, easy-to-read, consolidated event calendar. Search for specific company events and analyst conferences.

Increase Market Awareness

View live earnings webcasts and link to archives of past events. Track upcoming events with daily or weekly e-mail notices for companies in your personal, index and industry watchlists.

Track Webcast Attendees

Identify institutional investors and analysts participating in live and archived CCBN webcasted events. Monitor event registrations for upcoming events.



NYSEnet is a complimentary, easy-to-use service available exclusively to New York Stock Exchange listed companies via the Internet. It delivers comprehensive information on the performance of your company's stock in modules that provide market insight unavailable in other online services:

- Proprietary trading information
- Daily trading summary
- Market data and real time quotes
- Global share ownership information
- Comprehensive corporate events calendar

These features combine to offer:

- Insight into market behavior to assist in making decisions related to equity and capital
- Up-to-the-minute information on stock trading and market conditions
- The ability to analyze reports on your stock's performance versus its peers
- Information and analysis to build a targeted investor relations strategy
- Tools to strategically manage investor relations and corporate events

“NYSEnet, in combination with the market insight I receive from my specialist, enhances my knowledge about the trading activity in Agilent's stock and helps me communicate more effectively with my senior management.”

*Hilliard Terry, Director, Investor Relations,
Agilent Technologies, Inc.*

“The proprietary information in NYSEnet comes directly from the NYSE's trading systems. As a result, I have access to data that reflects the unique trading characteristics of Lowe's stock.”

*Paul Taaffe, Director, Investor Relations,
Lowe's Companies, Inc.*

For more information about NYSEnet, call your client service manager. To request a password for this complimentary service, please e-mail our Enterprise Service Center at nysenet@siac.com. Please include your name, title, company name and address, phone number and e-mail address.

New York Stock Exchange
20 Broad Street
New York, NY 10005
(212) 656-5539