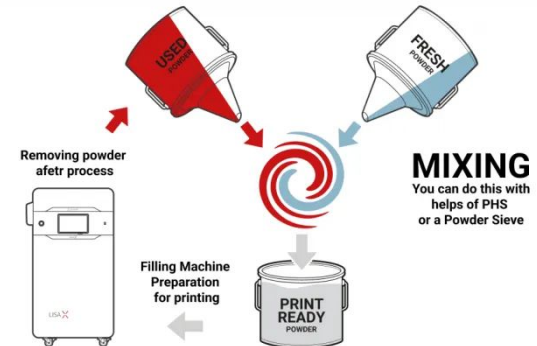
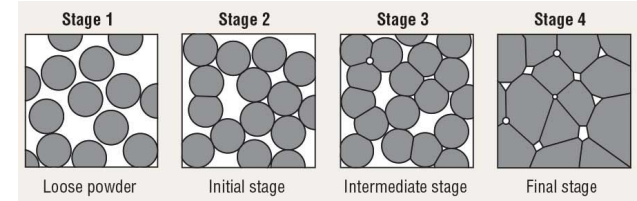


# Melters

- Selective Laser Sintering (SLS) and Selective Laser Melting (SLM)
- Heating powdered material to compress it into a solidified form
- SLM completely melts powder, SLS only partly melts
- Powder works as natural support so it can be recovered after the print
- Powder can be “refreshed” and reused by mixing it with new powder
- Different refresh ratios depending on material

<https://formlabs.com/blog/refresh-rate-sls-3d-printing/>

<https://sinterit.com/blog/sls-technology/sls-powder-refresh-rate-how-to-refresh-powder/>



Sajal Duppatla