

Principles of Software Construction: Objects, Design, and Concurrency

Part 1: Design for reuse

A formal design process: Domain modeling

Josh Bloch

Charlie Garrod



Administrivia

- Lean on Me: student-to-student support community
- Homework 3 late deadline tonight
- Required reading due today
 - UML and Patterns Chapters 14, 15, and 16
- Midterm exam this week
 - Extended time exam, released sometime Wednesday, due Thursday night
 - Review session tonight 7:30 – 9:30 p.m.
- Homework 4
 - Three parts, part A due next Thursday
 - Design review meetings next week

**Need someone
to talk to?**

We're here for you. Send us a text!

(412)-530-4700

 **Lean
on Me**
a non-crisis support hotline

leanOn.me/cmu
@leanonme.cmu



https://commons.wikimedia.org/wiki/File:1_carcassonne_aerial_2016.jpg

Key concepts from last Thursday

- More design patterns for reuse
 - Template method pattern
 - Iterator pattern
 - Decorator pattern
- Design principles: heuristics to achieve design goals
 - Low coupling
 - Low representational gap
 - High cohesion

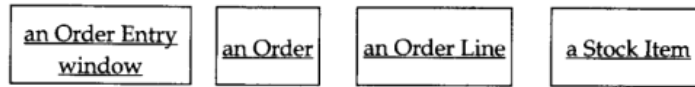
Today

- Interaction diagrams: to visualize dynamic behavior
- Understanding a design problem: Object-oriented analysis

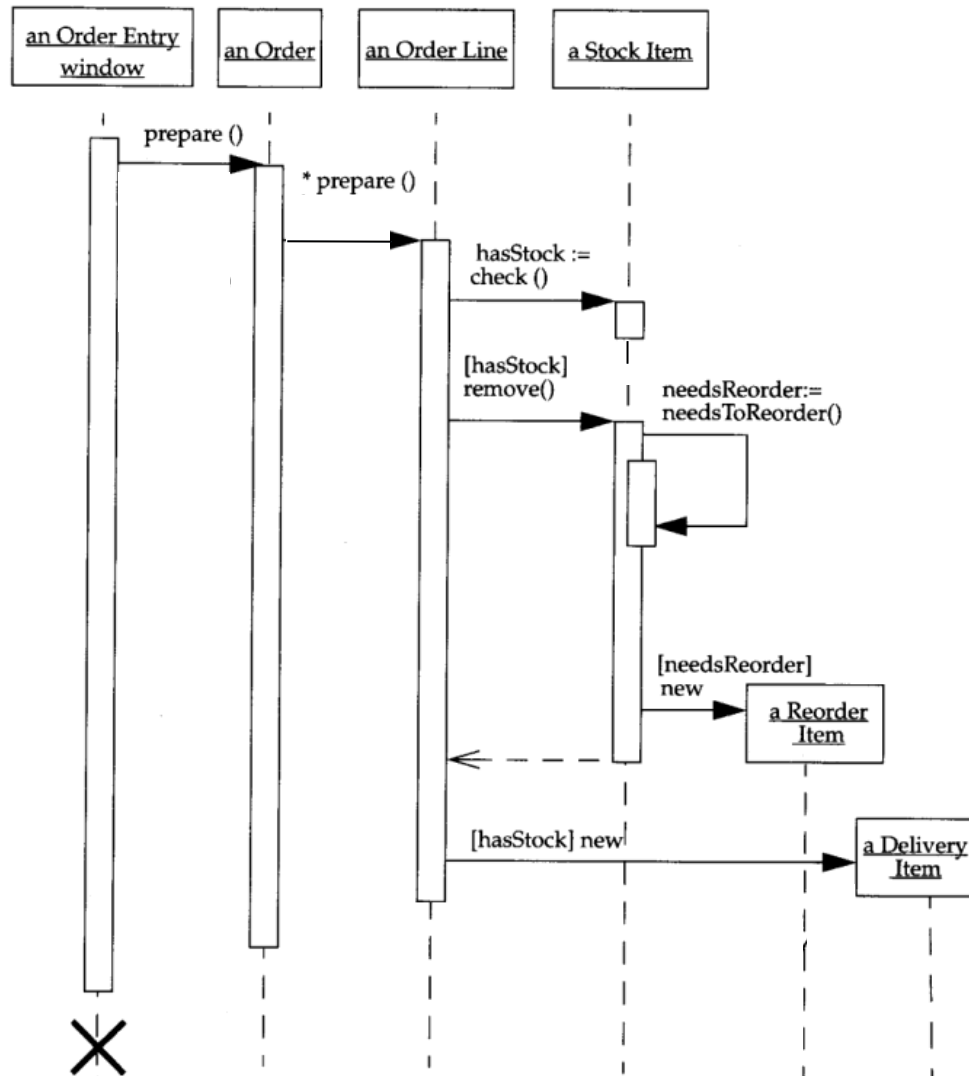
Visualizing dynamic behavior: Interaction diagrams

- An *interaction diagram* is a picture that shows, for a single scenario of use, the events that occur across the system's boundary or between subsystems
- Clarifies interactions:
 - Between the program and its environment
 - Between major parts of the program
- For this course, you should know UML *sequence diagrams*

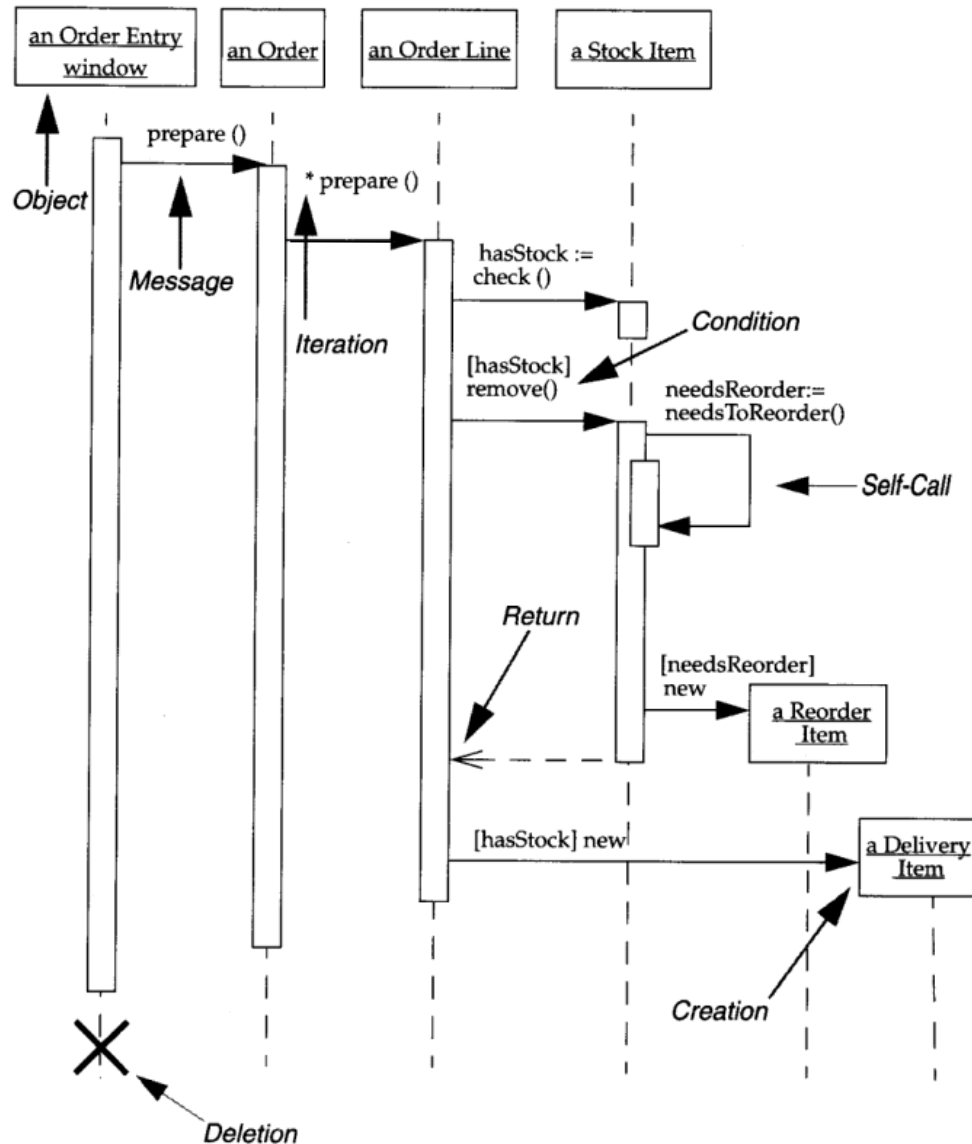
Constructing a sequence diagram



An example sequence diagram



(Sequence diagram with notation annotations)



Draw a sequence diagram for a call to `LoggingList.add`:

```
public class LoggingList<E> implements List<E> {  
    private final List<E> list;  
    public LoggingList<E>(List<E> list) { this.list = list; }  
    public boolean add(E e) {  
        System.out.println("Adding " + e);  
        return list.add(e);  
    }  
    public E remove(int index) {  
        System.out.println("Removing at " + index);  
        return list.remove(index);  
    }  
    ...  
}
```

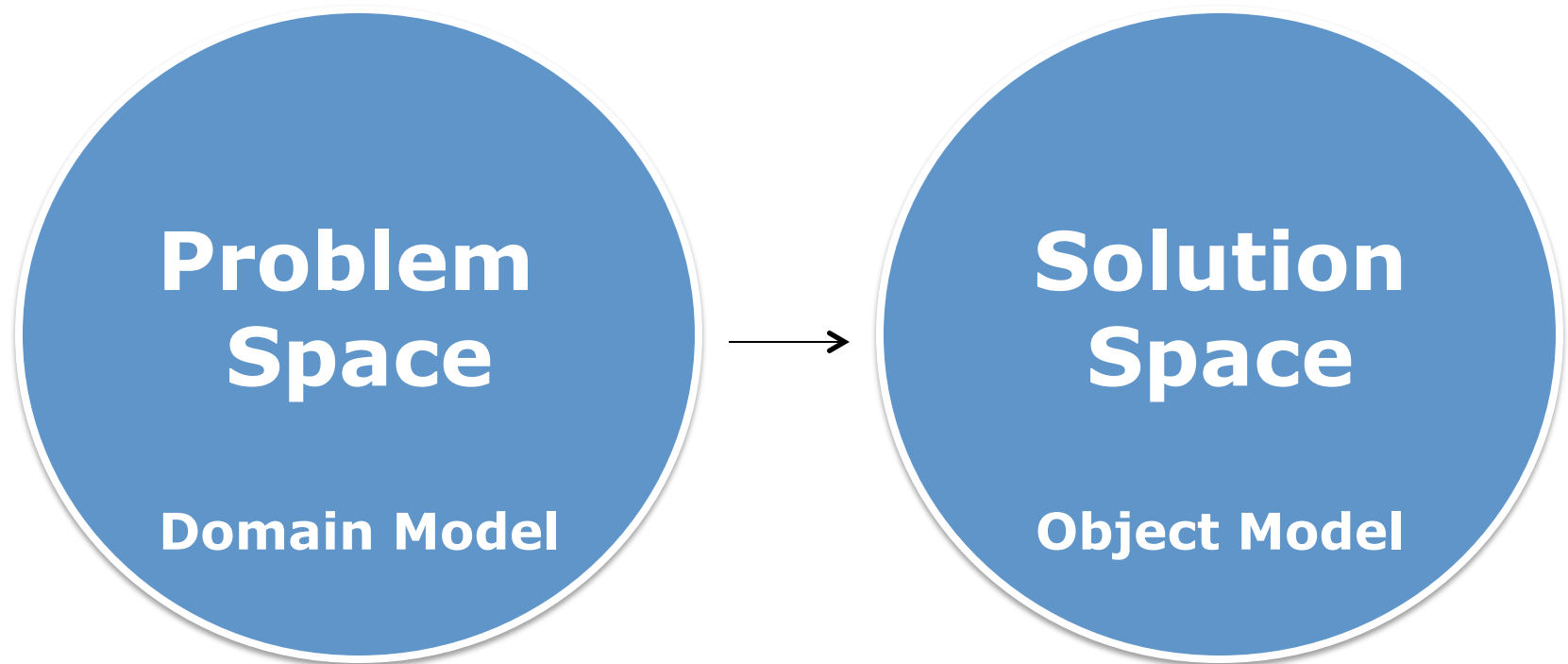
Today

- Interaction diagrams: to visualize dynamic behavior
- Understanding a design problem: Object-oriented analysis

A high-level software design process

- Project inception
 - Gather requirements
 - Define actors, and use cases
 - Model / diagram the problem, define objects
 - Define system behaviors
 - Assign object responsibilities
 - Define object interactions
 - Model / diagram a potential solution
 - Implement and test the solution
 - Maintenance, evolution, ...
-
- The diagram consists of three blue brackets on the right side of the list, each grouping a set of items. The first bracket groups the first three items and is labeled '17-313'. The second bracket groups the next five items and is labeled '17-214'. The third bracket groups the final two items and is labeled '...'.

Our path toward a more formal design process



- Real-world concepts
- Requirements, concepts
- Relationships among concepts
- Solving a problem
- Building a vocabulary


- System implementation
- Classes, objects
- References among objects and inheritance hierarchies
- Computing a result
- Finding a solution

Artifacts of this design process

- Model / diagram the problem, define objects
 - Domain model (a.k.a. conceptual model)
- Define system behaviors
 - System sequence diagram
 - System behavioral contracts
- Assign object responsibilities, define interactions
 - Object interaction diagrams
- Model / diagram a potential solution
 - Object model

Artifacts of this design process

- Model / diagram the problem, define objects
 - Domain model (a.k.a. conceptual model)
- Define system behaviors
 - System sequence diagram
 - System behavioral contracts
- Assign object responsibilities, define interactions
 - Object interaction diagrams
- Model / diagram a potential solution
 - Object model



Today:
understanding
the problem



Defining a
solution

Input to the design process: Requirements and use cases

- Typically prose:

A public library typically stores a collection of books, movies, or other library items available to be borrowed by people living in a community. Each library member typically has a library account and a library card with the account's ID number, which she can use to identify herself to the library. A member's library account records which items the member has borrowed and the due date for each borrowed item. Each type of item has a default rental period, which determines the item's due date when the item is borrowed.

member must
member's li

Use case scenario: A library member should be able to use her library card to log in at a library system kiosk and borrow a book. After confirming that the member has no unpaid late fees, the library system should determine the book's due date by adding its rental period to the current day, and record the book and its due date as a borrowed item in the member's library account.

Modeling a problem domain

- Identify key concepts of the domain description
 - Identify nouns, verbs, and relationships between concepts
 - Avoid non-specific vocabulary, e.g. "system"
 - Distinguish operations and concepts
 - Brainstorm with a domain expert

Modeling a problem domain

- Identify key concepts of the domain description
 - Identify nouns, verbs, and relationships between concepts
 - Avoid non-specific vocabulary, e.g. "system"
 - Distinguish operations and concepts
 - Brainstorm with a domain expert
- Visualize as a UML class diagram, a *domain model*
 - Show class and attribute concepts
 - Real-world concepts only
 - No operations/methods
 - Distinguish class concepts from attribute concepts
 - Show relationships and cardinalities

Building a domain model for a library system

A public library typically stores a collection of books, movies, or other library items available to be borrowed by people living in a community. Each library member typically has a library account and a library card with the account's ID number, which she can use to identify herself to the library.

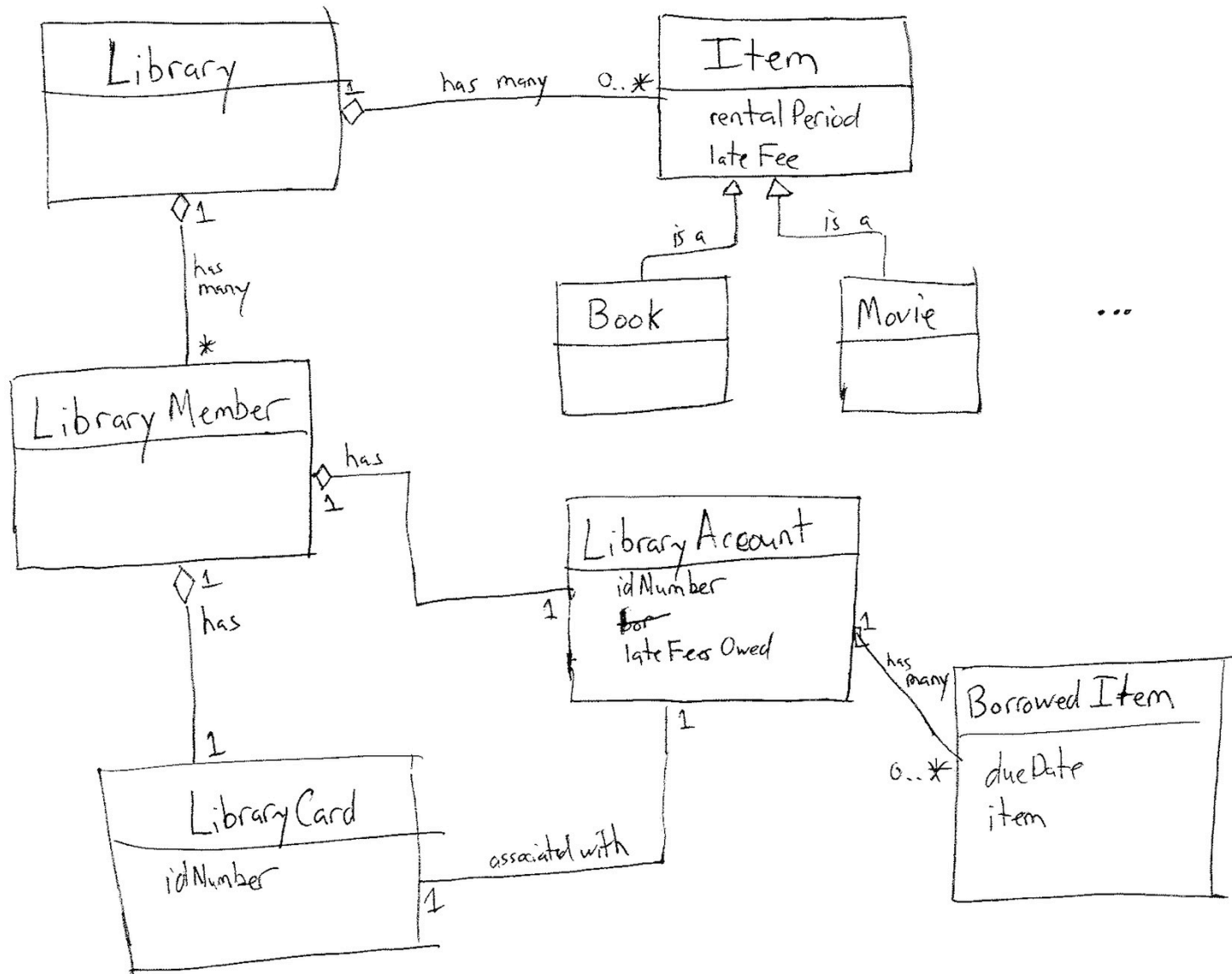
A member's library account records which items the member has borrowed and the due date for each borrowed item. Each type of item has a default rental period, which determines the item's due date when the item is borrowed. If a member returns an item after the item's due date, the member owes a late fee specific for that item, an amount of money recorded in the member's library account.

Building a domain model for a library system

A public library typically stores a collection of books, movies, or other library items available to be borrowed by people living in a community. Each library member typically has a library account and a library card with the account's ID number, which she can use to identify herself to the library.

A member's library account records which items the member has borrowed and the due date for each borrowed item. Each type of item has a default rental period, which determines the item's due date when the item is borrowed. If a member returns an item after the item's due date, the member owes a late fee specific for that item, an amount of money recorded in the member's library account.

One domain model for the library system



Notes on the library domain model

- All concepts are accessible to a non-programmer
- The UML is somewhat informal
 - Relationships are often described with words
- Real-world "is-a" relationships are appropriate for a domain model
- Real-world abstractions are appropriate for a domain model
- Iteration is important
 - This example is a first draft. Some terms (e.g. Item vs. LibraryItem, Account vs. LibraryAccount) would likely be revised in a real design.
- Aggregate types are usually modeled as classes
- Primitive types (numbers, strings) are usually modeled as attributes

Build a domain model for Homework 2

A simple computer and its assembly language

This section, along with Appendix A, describes a simple computer architecture and the minimum features your solution must support.

A computer architecture typically consists of (at least) some way to store in-processor data (called *registers*), off-processor data storage (*memory*) referenced by numeric address, a set of instructions that manipulate the values stored in the registers and memory, and a set of conventions for how the instruction set is used.

For this assignment, you must model a stack-based computer architecture whose processor has at least eight registers: one *program counter* (called PC), a *stack pointer* (called SP), and six general-purpose data registers (called R0, R1, R2, R3, R4, and R5). The program counter stores the address of the currently-executing instruction. Each data register stores a 32-bit

Possible domain models for Homework 2

Understanding system behavior with sequence diagrams

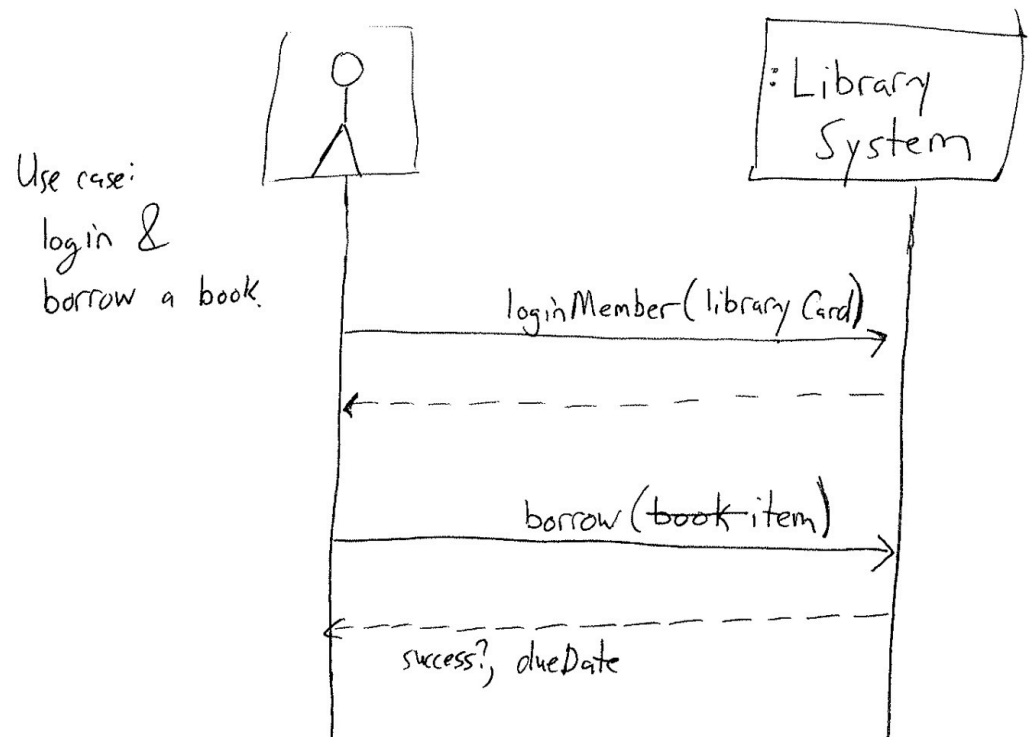
- A *system sequence diagram* is a model that shows, for one scenario of use, the sequence of events that occur on the system's boundary
- Design goal: Identify and define the interface of the system
 - System-level components only: e.g., A user and the overall system

Understanding system behavior with sequence diagrams

- *A system sequence diagram* is a model that shows, for one scenario of use, the sequence of events that occur on the system's boundary
- Design goal: Identify and define the interface of the system
 - System-level components only: e.g., A user and the overall system
- Input: Domain description and one use case
- Output: A sequence diagram of system-level operations
 - Include only domain-level concepts and operations

One sequence diagram for the library system

Use case scenario: A library member should be able to use her library card to log in at a library system kiosk and borrow a book. After confirming that the member has no unpaid late fees, the library system should determine the book's due date by adding its rental period to the current day, and record the book and its due date as a borrowed item in the member's library account.



Formalize system behavior with behavioral contracts

- A *system behavioral contract* describes the pre-conditions and post-conditions for some operation identified in the system sequence diagrams
 - System-level textual specifications, like software specifications

A system behavioral contract for the library system

Operation: borrow(item)

Pre-conditions: Library member has already logged in to the system.
Item is not currently borrowed by another member.

Post-conditions: Logged-in member's account records the newly-borrowed item, or the member is warned she has an outstanding late fee.
The newly-borrowed item contains a future due date, computed as the item's rental period plus the current date.

Distinguishing domain vs. implementation concepts

Distinguishing domain vs. implementation concepts

- Domain-level concepts:
 - Almost anything with a real-world analogue
- Implementation-level concepts:
 - Implementation-like method names
 - Programming types
 - Visibility modifiers
 - Helper methods or classes
 - Artifacts of design patterns

Summary: Understanding the problem domain

- Understanding the problem domain:
 - Know your tools to build domain-level representations
 - Domain models
 - System sequence diagrams
 - System behavioral contracts
 - Be fast and (sometimes) loose
 - Elide obvious(?) details
 - Iterate, iterate, iterate, ...
 - Get feedback from domain experts
 - Use only domain-level concepts

